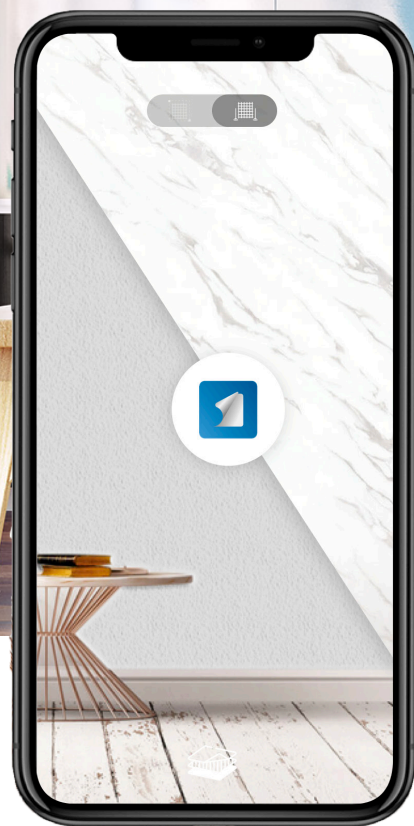




 **COVER STYL'**
SMART INTERIOR DESIGN

kitchen | coverstyl.com

THE ONLY LIMIT IS
YOUR IMAGINATION



Find and apply your future design
on our mobile application



**KITCHEN
MAKEOVER**

COVER STYL' INDEX

C O N T E N T

—	COUNTRY STYL' <i>COOKING</i>	4	_____
—	FARM STYL' <i>ROASTING</i>	6	_____
—	BELGIAN <i>CUISINE</i>	8	_____
—	FAMILY <i>DINNING</i>	10	_____
—	OFFICE <i>LUNCH TIME</i>	12	_____



COVER STYL'
COUNTRY

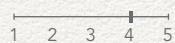


TIME

12 hours



DIFFICULTY



TOOLS

150-CS10 Squeegee
600-T800 Industrial Degreaser
100-Q23 Backing Cutter
100+SVR-2 OLFA Cutter



METHOD

1. Front side and back
2. Overlap with cut on edges
3. Thermoforming on edges

COLOUR REFERENCE



FORMULA

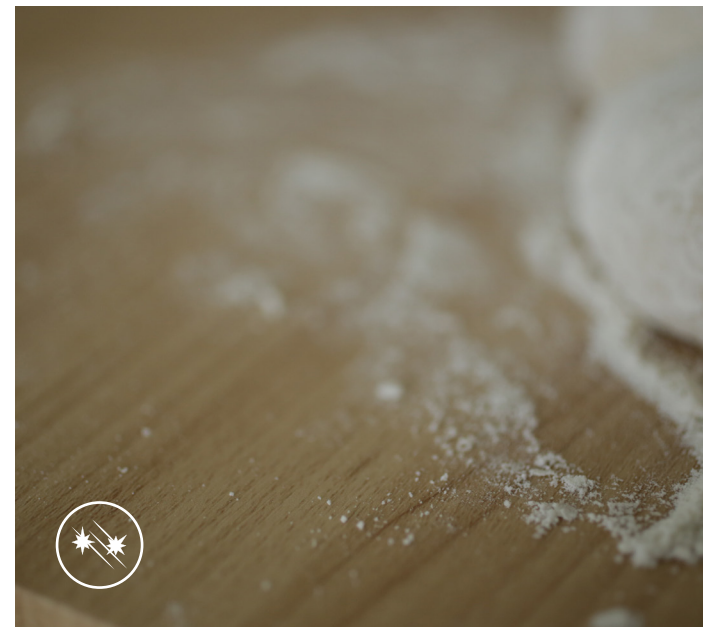
Primer ✓

Mastic ✓

Cover Styl' 15 LM J3
6 LM B3

PROCESS

This kitchen was difficult for the finishes of the 4 glass doors. My tip is to plan the work in several steps. We used new boards to give a new modern look and to save time in reparation/preparation.





BEFORE



AFTER

COVER STYL' PRESENTS
FARM STYL'
 ROASTING



COVER STYL'
FARM



TIME

4 persons
 1 day



DIFFICULTY



TOOLS

#150-CS10 Squeegee
 #600-T800 Industrial Degreaser
 #100-Q23 Backing Cutter
 # 100+SVR-2 OLFA Cutter



METHOD

1. Front and sides without the back
2. Overlap with cut on edges

COLOUR REFERENCE



FORMULA

Primer ✓

Mastic ✓

Cover Styl' 18 LM M7

PROCESS

The fronts of this kitchen remained. Simply the gloss finish was removed in order to cover it with Cover Styl'. A simple and easy kitchen, just as many others! We used this opportunity to train our in house staff!





BEFORE



AFTER

COVER STYL' BELGIAN

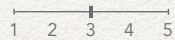


TIME

1,5 days
1 person



DIFFICULTY



TOOLS

150-CS10 Squeegee
600-T800 Industrial Degreaser
100-Q23 Backing Cutter
100+SVR-2 OLFA Cutter



METHOD

1. Front and sides without the back
2. Overlap with cut on edges

COLOUR REFERENCE



FORMULA

Primer ✓

Mastic ✓

Cover Styl' 15 LM NE81
3 LM NE77

PROCESS

These doors had edges, straight on one side and round on the other, so finishing was a bit harder than on normal edges. But no issue if you use the correct technique. This is something we teach day to day in our Training Center!





BEFORE



AFTER

COVER STYL'

FAMILY

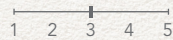


TIME

2 days
3 persons
doing a coaching on
site for new workers



DIFFICULTY



TOOLS

150-CS10 Squeegee
600-T800 Industrial Degreaser
100-Q23 Backing Cutter
100+SVR-2 OLFA Cutter



METHOD

1. Front and sides
without the back
2. Overlap with cut
on edges

COLOUR REFERENCE

EGGSHELL
VELVET GRAIN
R0

FORMULA

Primer ✓

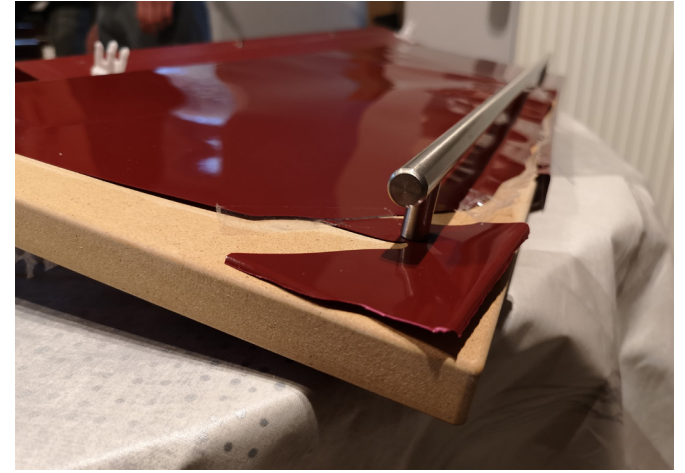
Mastic ✓

Cover Styl' 18 LM N3

PROCESS

The most tricky part for them was to not highlight the overlap between the layers. Also the doors had edges straight on one side and round on the other, so finishing was a bit harder than usual. But no issue if you use the correct technic.





BEFORE



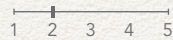
AFTER

COVER STYL'

OFFICE

**TIME**

3/4 hours
2 persons

**DIFFICULTY****TOOLS**

150-CS10 Squeegee
600-T800 Industrial Degreaser
100-Q23 Backing Cutter
100+SVR-2 OLFA Cutter

**METHOD**

1. Front and sides without the back
2. Overlap with cut on edges

COLOUR REFERENCE**FORMULA**

Primer ✓

Mastic ✗

Cover Styl' 10 LM U20
2 LM CT82

PROCESS

It's always nice when in 3/4 hours you can change again look at kitchens, this was previously wrapped in many different colours but client decided for a new look in concrete, so we just apply over the old one! And at the end he's decided for beautiful wood effect behind the sink.





BEFORE



AFTER

WATCH VIDEO HERE





WIDE CHOICE OF COLOURS



WATER RESISTANT / WATER TEST



STAIN RESISTANT / TCHIBO TEST



LOW MAINTENANCE



DURABLE, LONG-LASTING



ABRASION TEST



FIRE TEST



SOFT TOUCH



VOC



REACH / CE

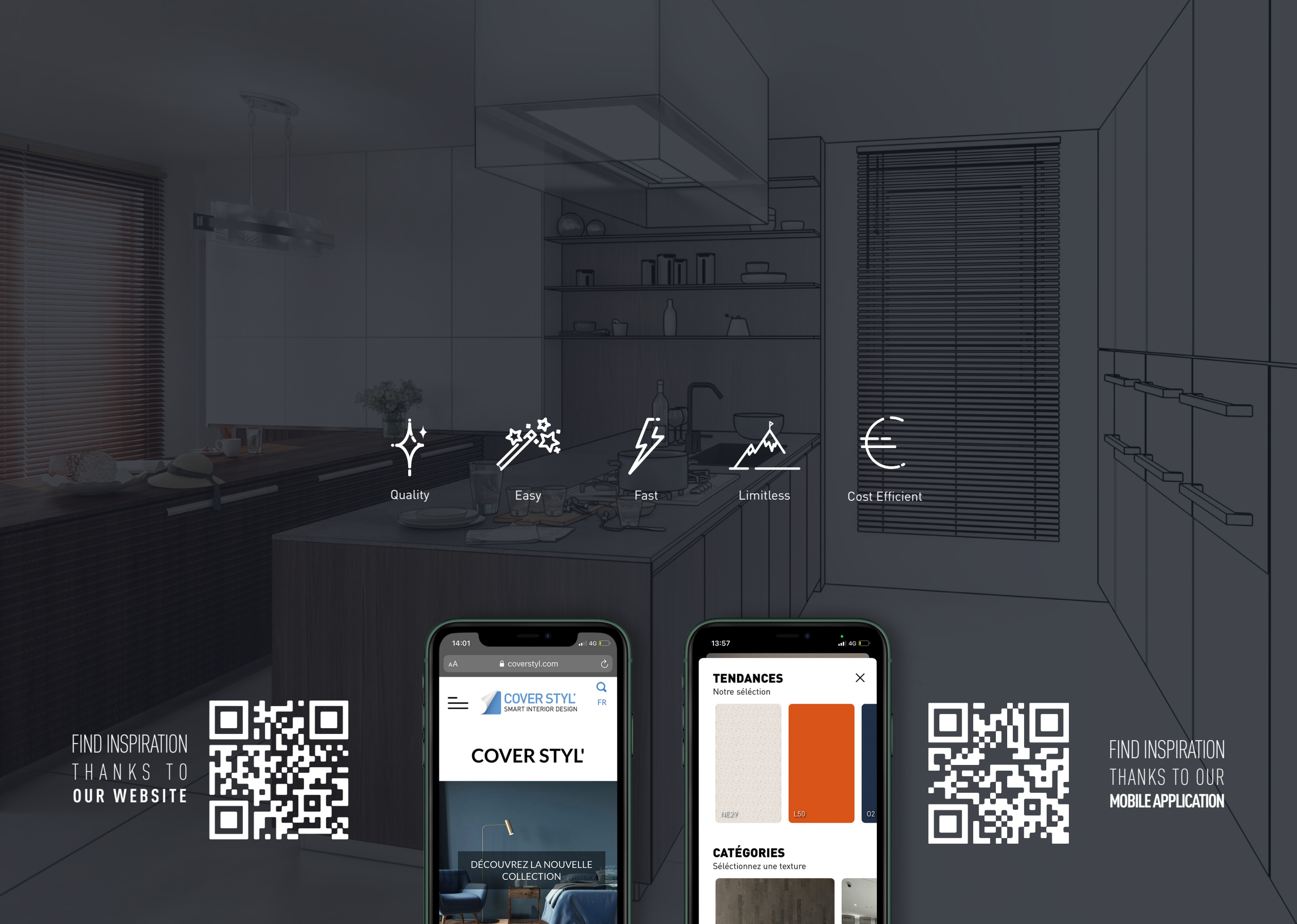
IF YOU CUT, CUT LIKE A PRO





FRANKFURTER BRETT™





Quality



Easy



Fast

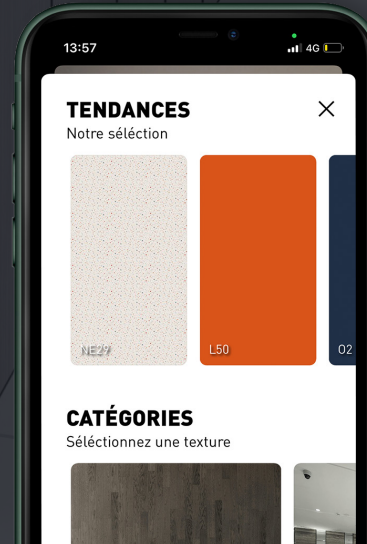


Limitless



Cost Efficient

FIND INSPIRATION
THANKS TO
OUR WEBSITE



FIND INSPIRATION
THANKS TO OUR
MOBILE APPLICATION