

SOLID
BASIC SOLID

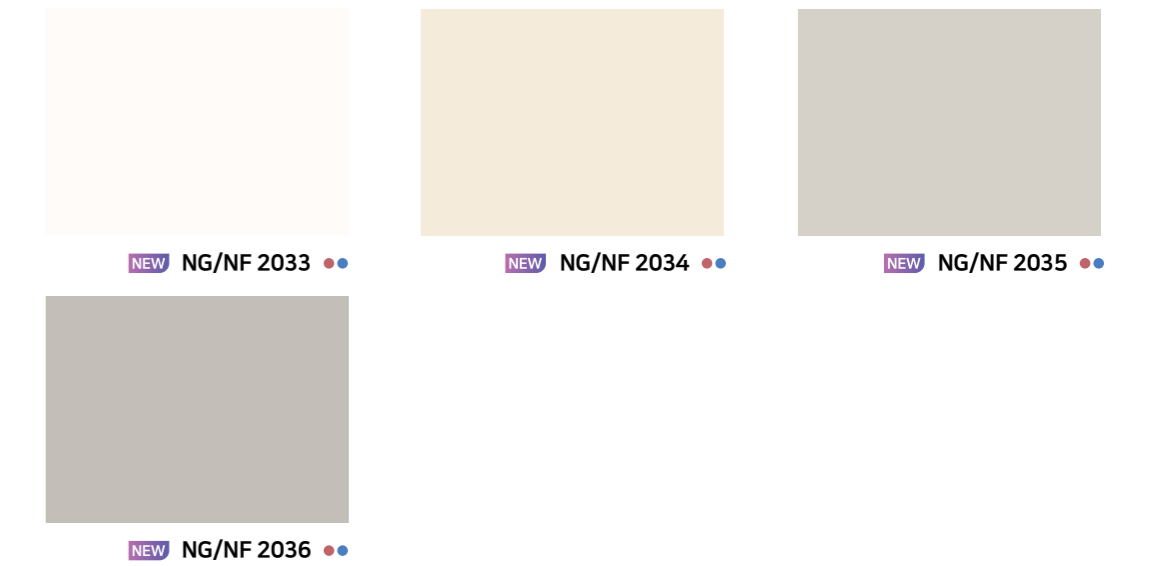


SOLID
BASIC SOLID

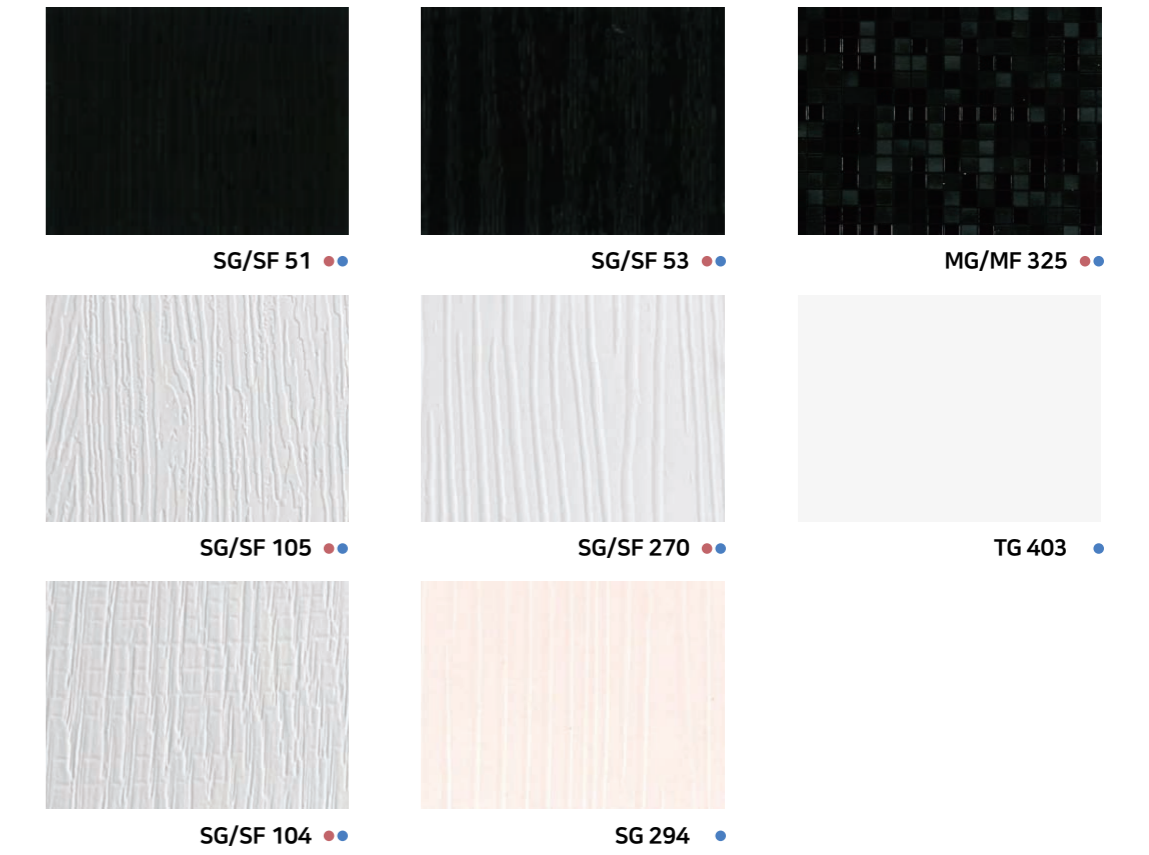


Fire Retardant ● | Standard Range ● | NEW NEW

SOLID
TRENDY SOLID

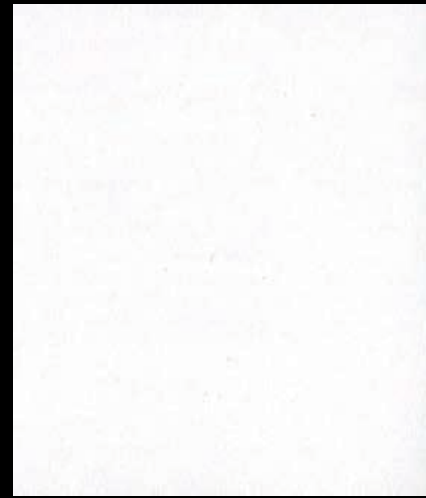


SOLID
TEXTURE



SOFT MATT

Premium product that allows of smooth texture and luxurious matt display with special coatings on the surface, and maximizes monochromatic comfort through NON-SCRATCH function and painting techniques.



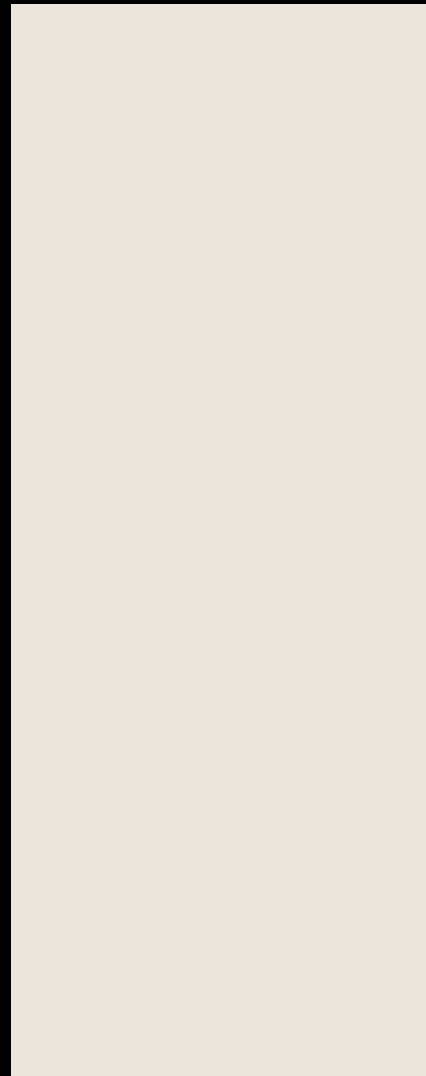
Soft Matt  **NEW** TG/TF 4025 ●●




Soft Matt  **NEW** TG/TF 4028 ●●



Soft Matt  **NEW** TG/TF 4029 ●●




Soft Matt  TG/TF 4018 ●●



Soft Matt  **NEW** TG/TF 4026 ●●




Soft Matt  **NEW** TG/TF 4027 ●●

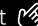
SOFT MATT

Fire Retardant ● | Standard Range ● | NEW **NEW**




Soft Matt  TG 4024 ●

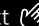


Soft Matt  TG/TF 4021 ●●

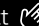


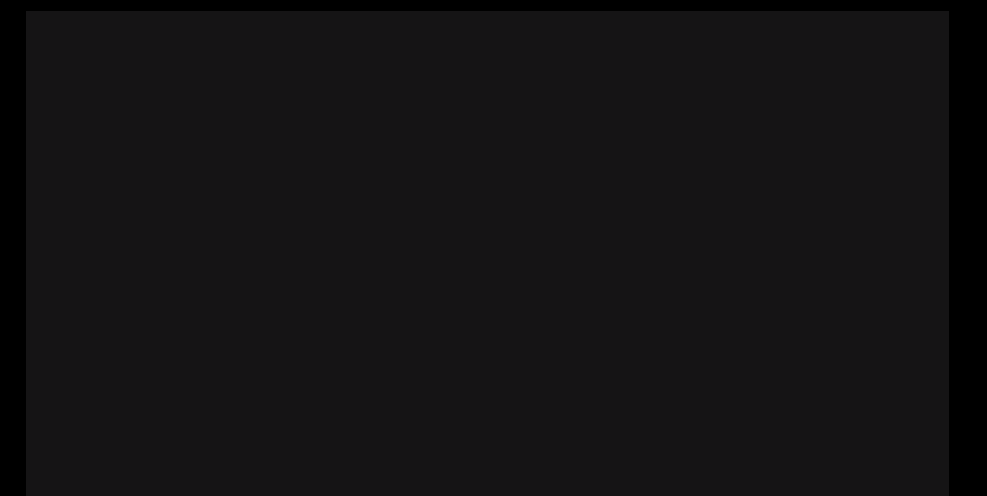
Soft Matt  TG/TF 4022 ●●

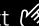


Soft Matt  TG 4019 ●



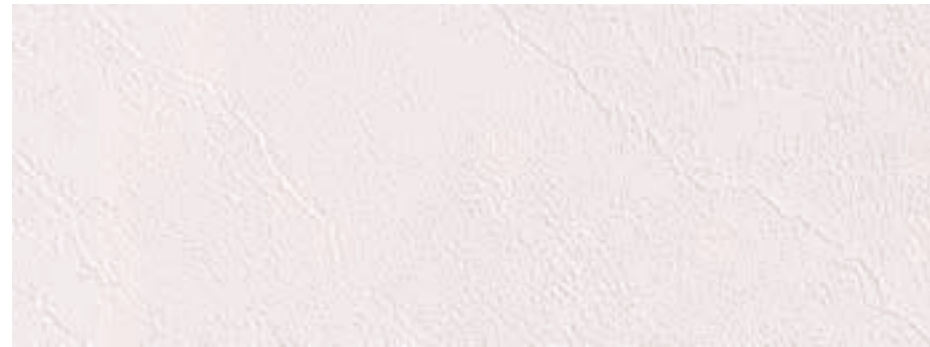
Soft Matt  TG/TF 4020 ●●



Soft Matt  TG/TF 4023 ●●

※ As being treated with a special process on the surfaces, it feels initially not sticky enough in the overlapped parts, but being fully pressed adhesive parts will be stabilized stronger over time.

SOLID
EMBOSS PATTERN



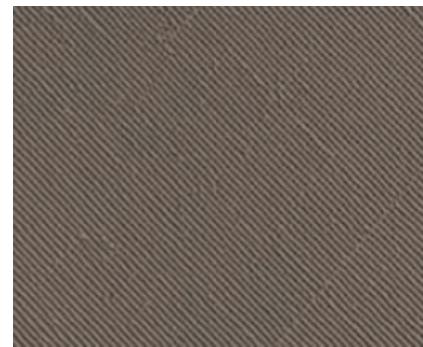
Emboss Pattern **MG/MF 3071**



Emboss Pattern **MG/MF 3073**



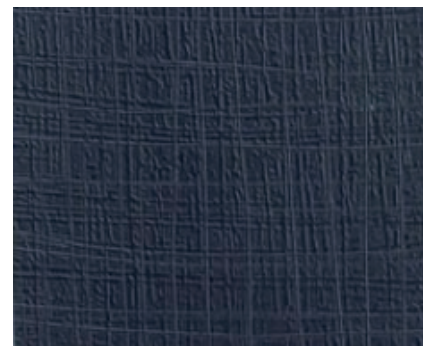
Emboss Pattern **DG/DF 3508**



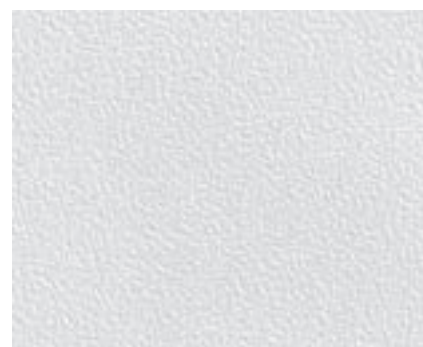
Emboss Pattern **DG/DF 3509**



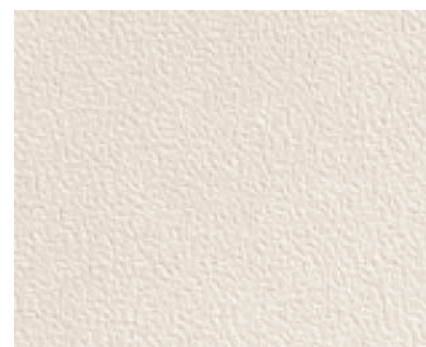
Painted Wood **NG/NF 2026**



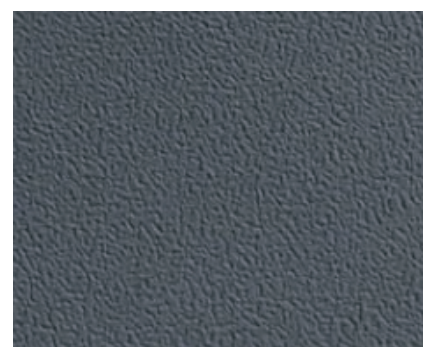
Painted Wood **NG 2028**



Emboss Pattern **NG/NF 2029**



Emboss Pattern **NG/NF 2030**



Emboss Pattern **NG/NF 2031**

SOLID
PEARL WOOD

Fire Retardant ● | Standard Range ● | NEW **NEW**



Pearl Wood **MG/MF 3050**



Pearl Wood **MG 50**



Pearl Wood **TG 433**



Pearl Wood **MG 3051**



Pearl Wood **MG 466**



Pearl Wood **MG 496**

SOLID
PAINTED WOOD



SG/SF 1129 ●●



SG/SF 1162 ●●



SG/SF 1168 ●●



SG/SF 1161 ●●



SG/SF 1163 ●●



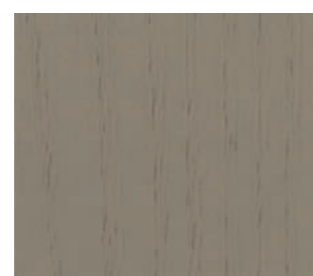
SG/SF 1123 ●●



SG/SF 1160 ●●



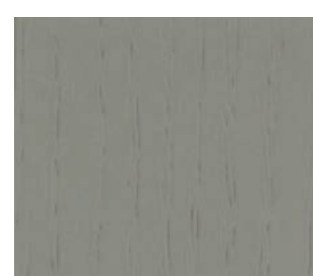
SG/SF 1167 ●●



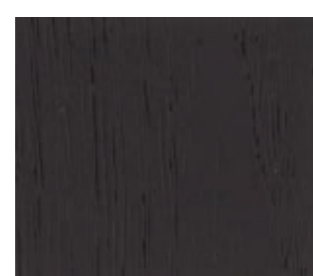
SG/SF 1164 ●●



SG/SF 1202 ●●



SG/SF 1171 ●●



SG/SF 1150 ●●



SG/SF 1153 ●●

SOLID
PAINTED WOOD



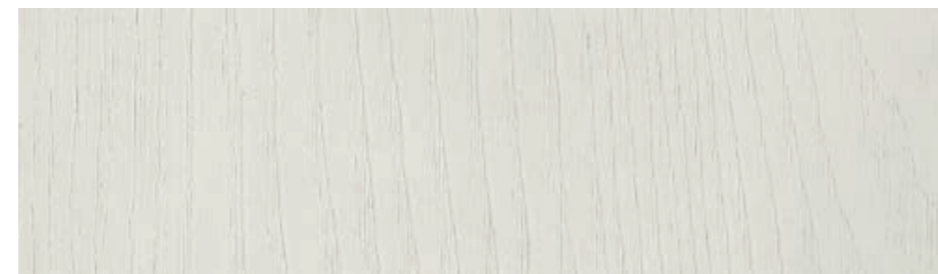
MG/MF 3077 ●●



MG/MF 3074 ●●



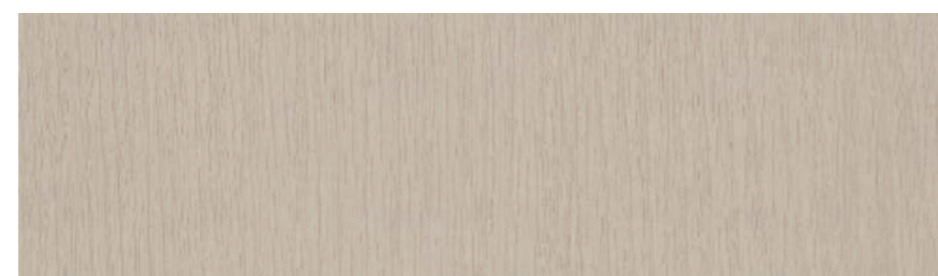
TG 434 ●



MG/MF 3027 ●●



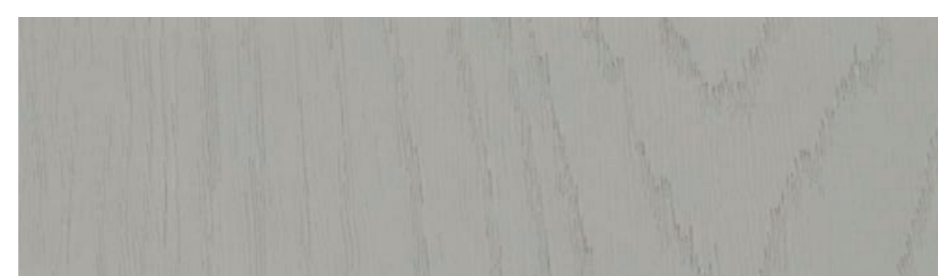
NG 2017 ●



MG 3032 ●



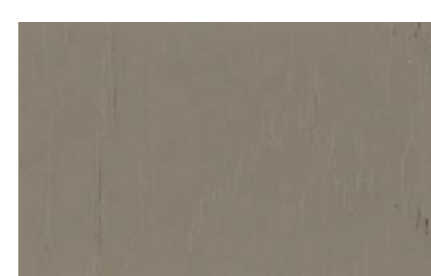
MG/MF 3026 ●●



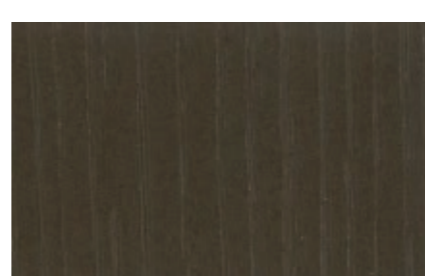
MG/MF 3075 ●●



SG/SF 1122 ●●



SG 1124 ●



MG/MF 3076 ●●

SOLID
PAINTED WOOD

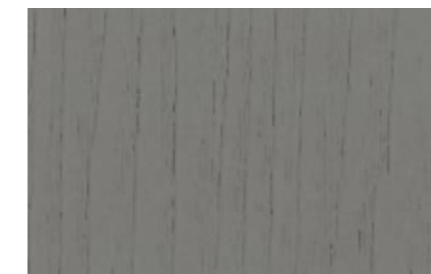
Fire Retardant ● | Standard Range ● | NEW **NEW**



MG/MF 3028 ●●



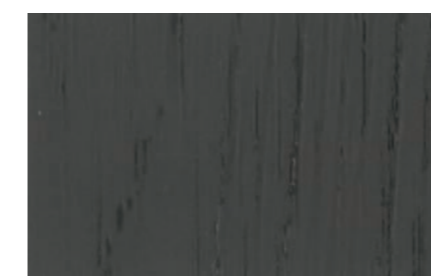
MG/MF 3033 ●●



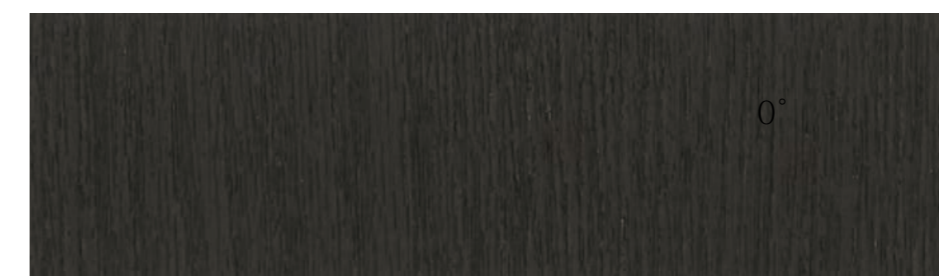
MG/MF 3029 ●●



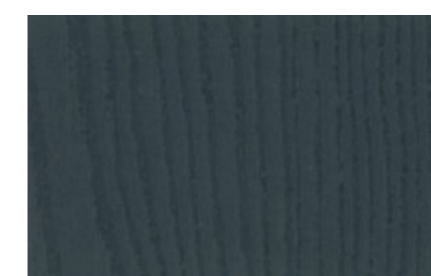
SG/SF 1125 ●●



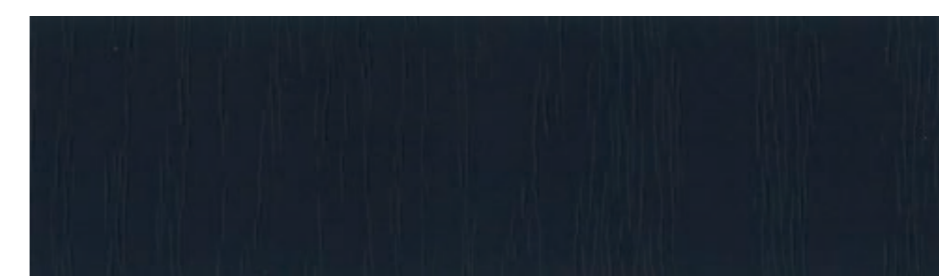
NG 2019 ●



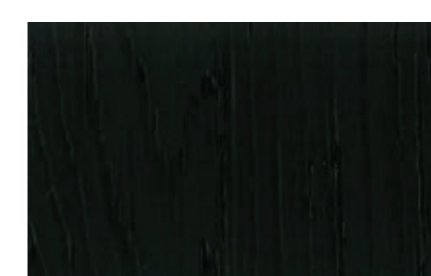
MG/MF 3034 ●●



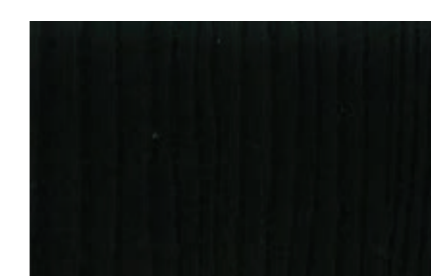
SG/SF 1140 ●●



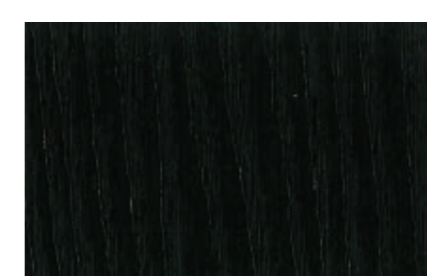
MG/MF 3079 ●●



NG/NF 2018 ●●



SG/SF 1127 ●●



MG 3030 ●

SOLID
PAINTED WOOD



SG/SF 1133 ●●



SG/SF 1139 ●●



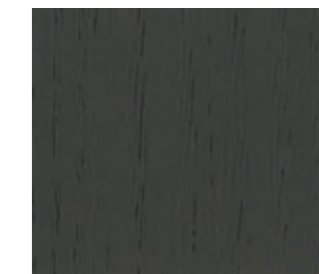
SG/SF 1173 ●●



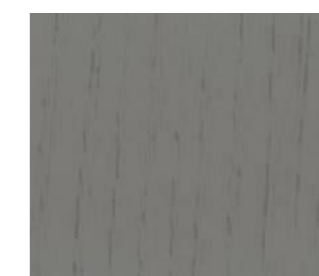
SG/SF 1169 ●●



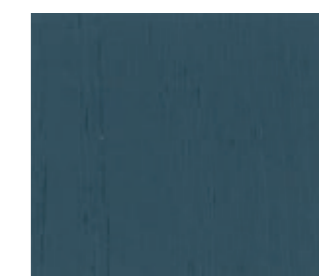
SG/SF 1130 ●●



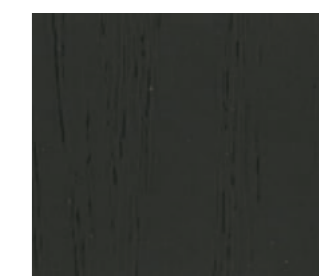
SG/SF 1126 ●●



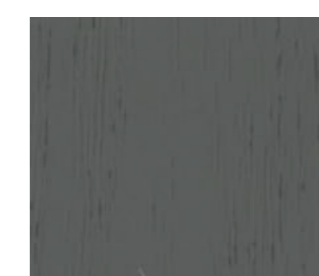
SG/SF 1172 ●●



SG/SF 1157 ●●



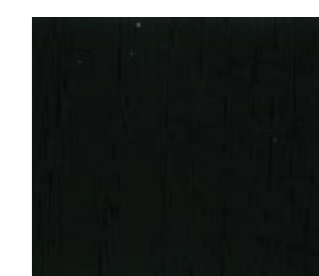
SG/SF 1175 ●●



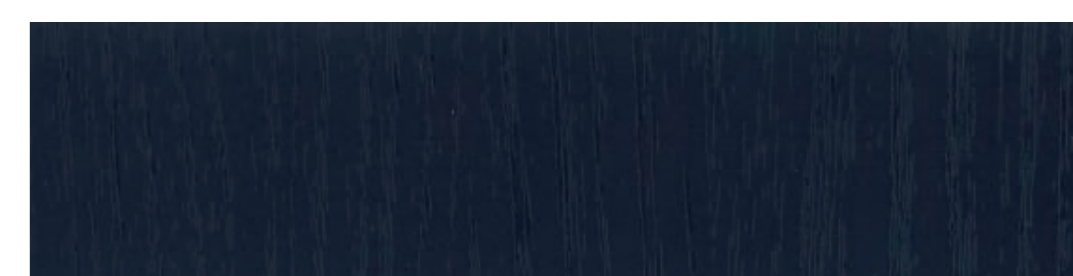
SG/SF 1131 ●●



SG/SF 1158 ●●



SG/SF 1176 ●●



SG/SF 1132 ●●

PREMIUM WOOD

Premium matt are specially designed for surfaces. Soft texture and luxurious matt display. Through NON-SCRATCH functions and painting techniques, Premium products maximize luxury.

HG/HF 5113

The images are for illustrative purposes and may differ from actual product.

PREMIUM MATT WOOD



Primary Oak

NEW HG/HF 5113


PREMIUM MATT

WOOD




The images are for illustrative purposes and may differ from actual product.



Primary Oak 

NEW HG/HF 5112 





Primary Oak 


NEW HG/HF 5114 


PREMIUM MATT

WOOD


Fire Retardant  | Standard Range  | **NEW** 



Oak 

NEW HG/HF 5106 




Oak 

NEW HG/HF 5107 

※ As being treated with a special process on the surfaces, it feels initially not sticky enough in the overlapped parts, but being fully pressed adhesive parts will be stabilized stronger over time.


PREMIUM MATT
WOOD



Rainy Teak 

NEW HG/HF 5108 



Rainy Teak 

NEW HG/HF 5109 



HG/HF 5108


PREMIUM MATT
WOOD



Oak 


NEW HG/HF 5110 



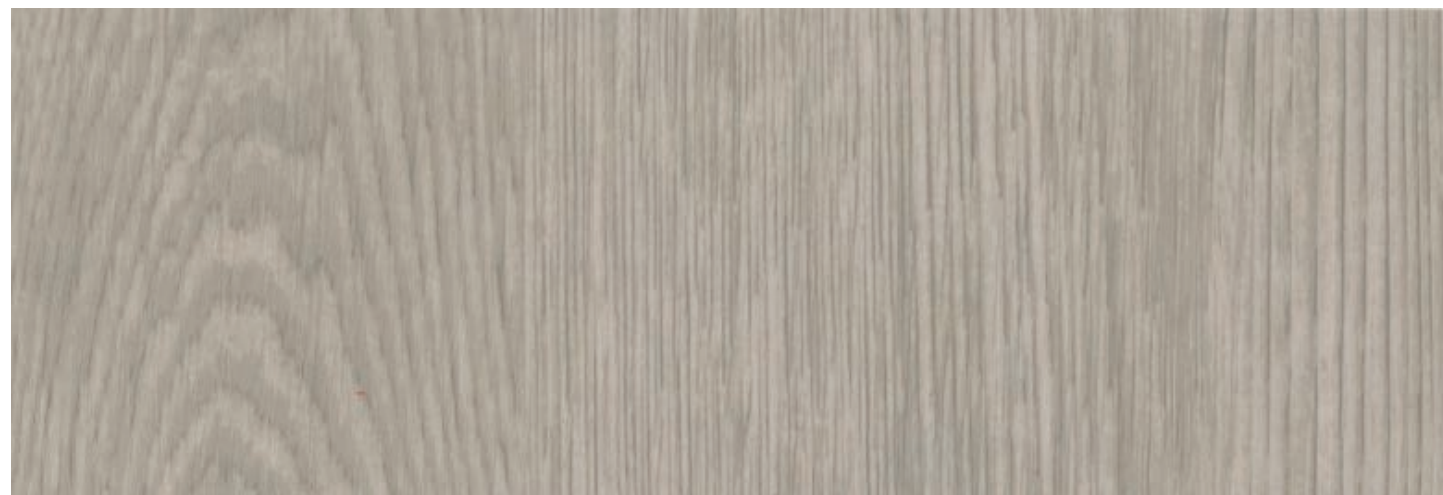
Oak 

NEW HG/HF 5111 




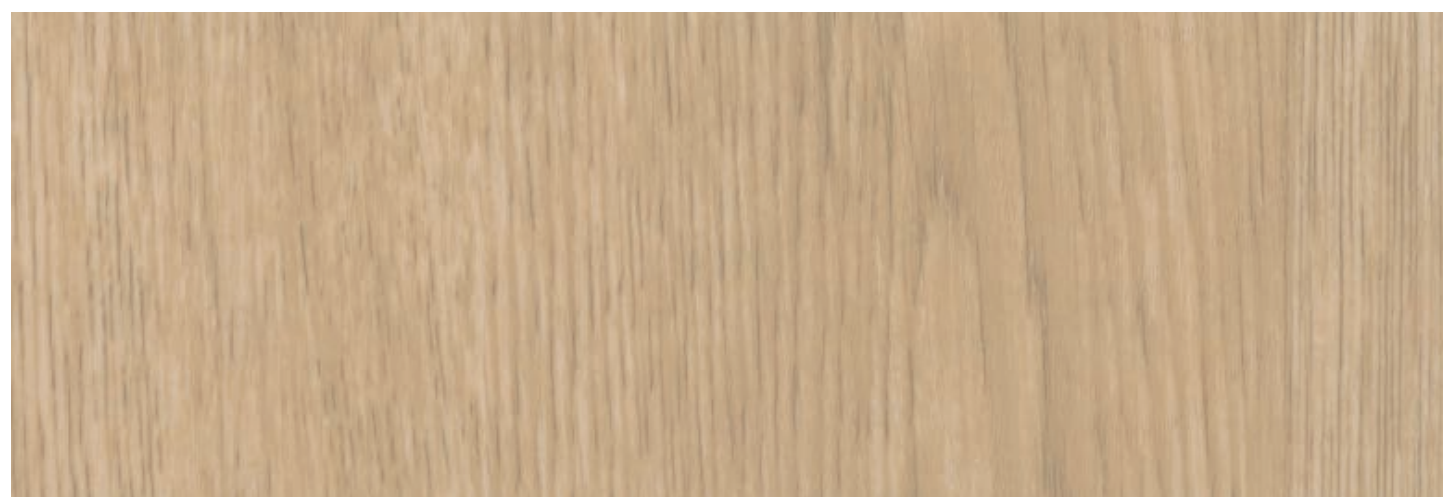
HG/HF 5110 

PREMIUM MATT
WOOD




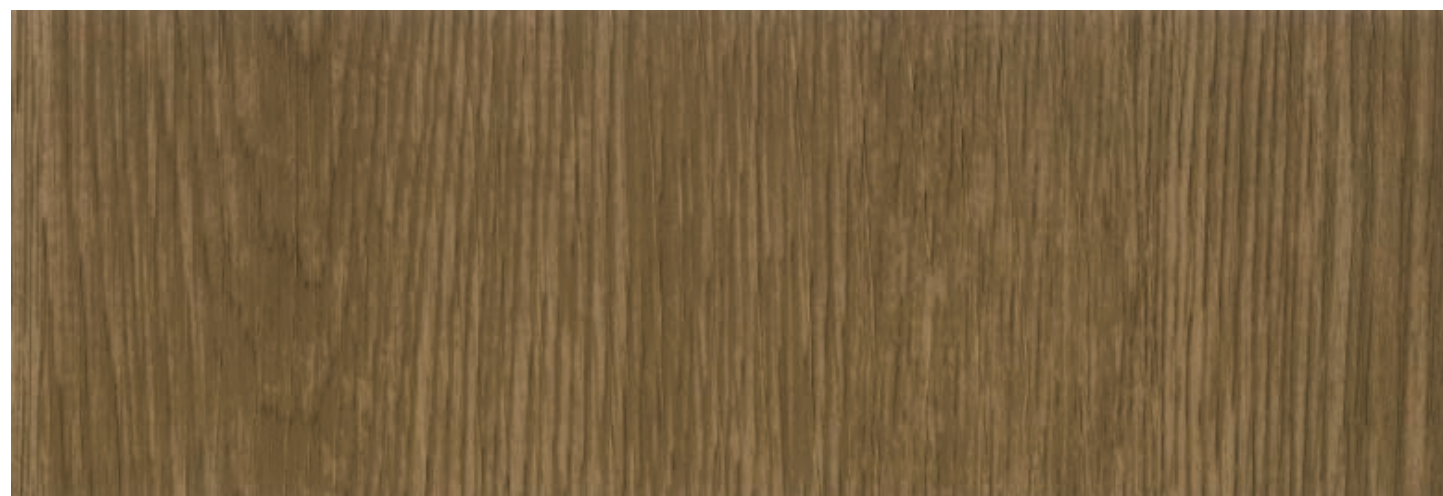
Ash 

CG/CF 5503 



Ash 

CG/CF 5504 



Ash 

CG/CF 5505 



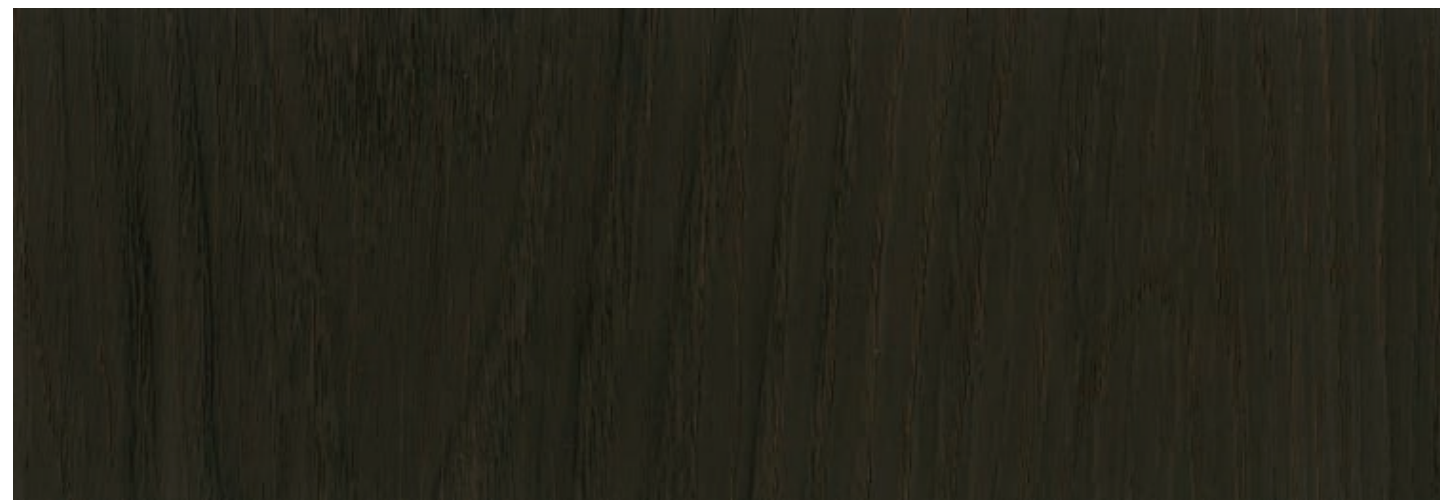
CG/CF 5505 

PREMIUM MATT
WOOD



Ash

CG/CF 5506 ●●



Ash

CG/CF 5507 ●●



CG/CF 5507

The images are for illustrative purposes and may differ from actual product.

PREMIUM MATT
WOOD

Fire Retardant ● | Standard Range ● | NEW **NEW**



CG/CF 5532

The images are for illustrative purposes and may differ from actual product.



Classic Oak

CG/CF 5532 ●●



Classic Oak

CG/CF 5533 ●●

※ As being treated with a special process on the surfaces, it feels initially not sticky enough in the overlapped parts, but being fully pressed adhesive parts will be stabilized stronger over time.

PREMIUM MATT
WOOD



Oak

CG/CF 5516 ●●



Oak

CG/CF 5517 ●●



Oak

CG/CF 5518 ●●

PREMIUM MATT
WOOD

Fire Retardant ● | Standard Range ● | NEW **NEW**



The images are for illustrative purposes and may differ from actual product.



Oak

CG/CF 5500 ●●



Oak

CG/CF 5501 ●●



Oak

CG/CF 5502 ●●

※ As being treated with a special process on the surfaces, it feels initially not sticky enough in the overlapped parts, but being fully pressed adhesive parts will be stabilized stronger over time.

PREMIUM MATT
WOOD



CG/CF 5510

The images are for illustrative purposes and may differ from actual product.



Teak

CG/CF 5512



Teak

CG/CF 5510



Teak

CG/CF 5511

PREMIUM MATT
WOOD

Fire Retardant ● | Standard Range ● | NEW NEW



Ash

CG/CF 5513



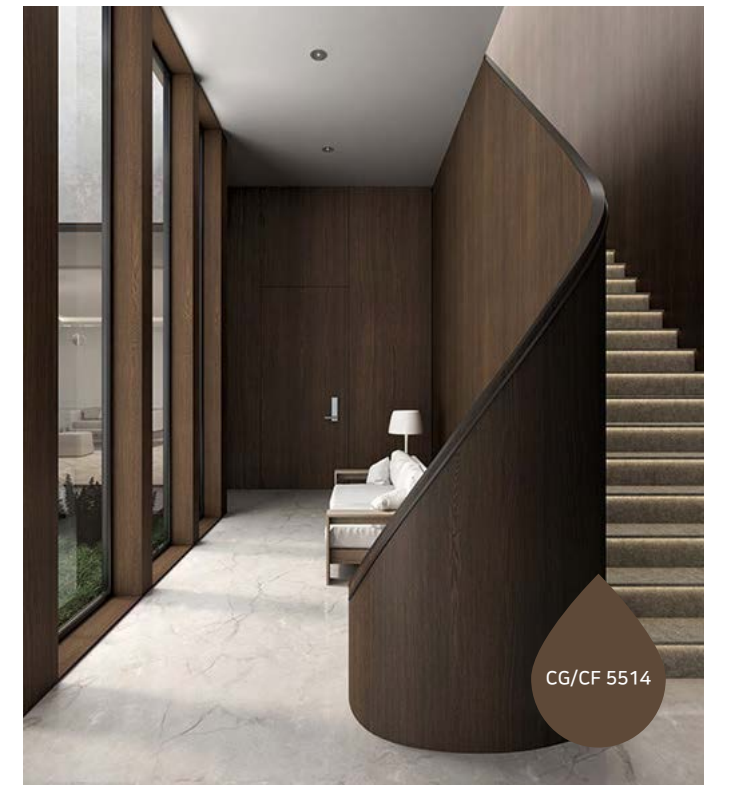
Ash

CG/CF 5514



Ash

CG/CF 5515



CG/CF 5514

The images are for illustrative purposes and may differ from actual product.

※ As being treated with a special process on the surfaces, it feels initially not sticky enough in the overlapped parts, but being fully pressed adhesive parts will be stabilized stronger over time.


PREMIUM MATT
WOOD



Pine 

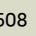
CG/CF 5508 



Pine 


CG/CF 5509 



CG/CF 5508 




PREMIUM MATT
WOOD




Standard Oak 


CG/CF 5520 

PREMIUM MATT
WOOD


Fire Retardant  | Standard Range  | NEW 



Standard Oak 


CG/CF 5519 




Standard Oak 

CG/CF 5521 



Standard Oak 

CG/CF 5522 

※ As being treated with a special process on the surfaces, it feels initially not sticky enough in the overlapped parts, but being fully pressed adhesive parts will be stabilized stronger over time.

PREMIUM STONE

MATT STONE has increased surface quality with matt and special coatings felt in real stone. Enhance the dignity of your space with new sensuous products.

HG/HF 5119

The images are for illustrative purposes and may differ from actual product.

PREMIUM MATT STONE

방염 ● | 비방염 ● | 신제품 NEW



Brush Cement

NEW HG/HF 5117 ●●



Brush Cement

NEW HG/HF 5118 ●●



Brush Cement

NEW HG/HF 5119 ●●

PREMIUM MATT
STONE

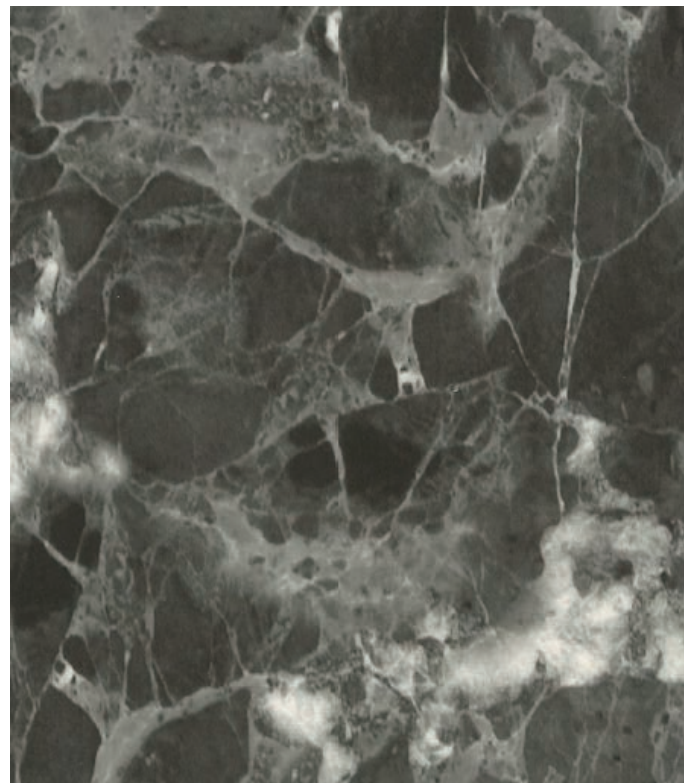


HG/HF 5120



Matt Marble

NEW HG/HF 5120

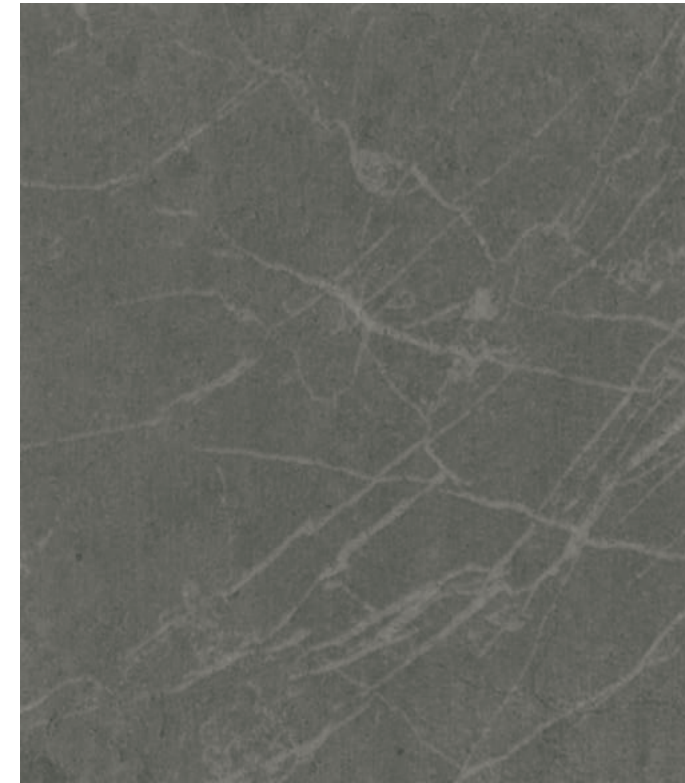


Matt Marble

NEW HG/HF 5121

PREMIUM MATT
STONE

Fire Retardant ● | Standard Range ● | NEW NEW



Matt Marquina

NEW HG/HF 5122



Matt Marquina

NEW HG/HF 5123



HG/HF 5122

The images are for illustrative purposes and may differ from actual product.

※ As being treated with a special process on the surfaces, it feels initially not sticky enough in the overlapped parts, but being fully pressed adhesive parts will be stabilized stronger over time.

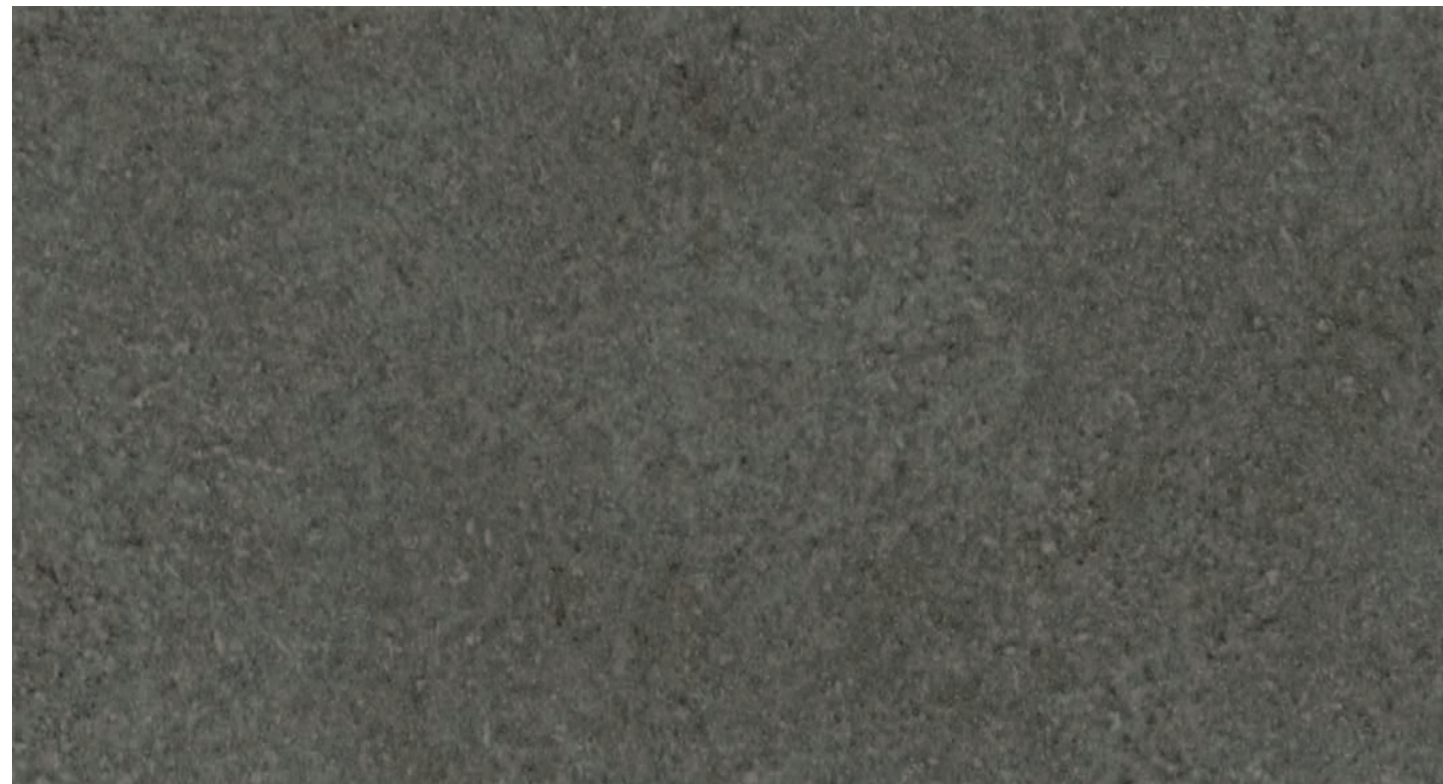
PREMIUM MATT

STONE



Urban Stone 

NEW HG/HF 5115 






Urban Stone 

NEW HG/HF 5116 


PREMIUM MATT

STONE

Fire Retardant  | Standard Range  | **NEW** 



Travertine 

CG/CF 5529 




Travertine 

CG/CF 5530 



Travertine 

CG/CF 5531 

※ As being treated with a special process on the surfaces, it feels initially not sticky enough in the overlapped parts, but being fully pressed adhesive parts will be stabilized stronger over time.

PREMIUM FABRIC

MATT FABRIC is a premium product that provides warmth, softness of a fabric which is on a different level from existing fabrics and a soft texture when touched.



CG/CF 5528

The images are for illustrative purposes and may differ from actual product.

PREMIUM MATT FABRIC

방염 ● | 비방염 ● | 신제품 NEW

손끝으로
만져보세요!



Real Fabric

CG/CF 5528 ●●



Real Fabric

CG/CF 5526 ●●



Real Fabric

CG/CF 5527 ●●

PREMIUM MATT
FABRIC



Warm Linen 

CG/CF 5523  



Warm Linen 

CG/CF 5524  



Warm Linen 

CG/CF 5525  



CG/CF 5525

PREMIUM METAL

MATT METAL is a range of products that express the feel of a simple, luxurious metal. Decorate your space with confidence with MATT METAL, which matches your metallic modern lifestyle.

JG/JF 9000

The images are for illustrative purposes and may differ from actual product.

PREMIUM MATT METAL

방염 ● | 비방염 ● | 신제품 **NEW**



Blackened Steel (Blue)

NEW JG/JF 9000 ●●



Blackened Steel (Bronze)

NEW JG/JF 9001 ●●

PREMIUM MATT
METAL



XG/XF 7014



Cloud Metal

XG/XF 7015



Metal Slate

XG/XF 7014

PREMIUM MATT
METAL

Fire Retardant ● | Standard Range ● | NEW NEW



Minimal Cloud

XG/XF 7012



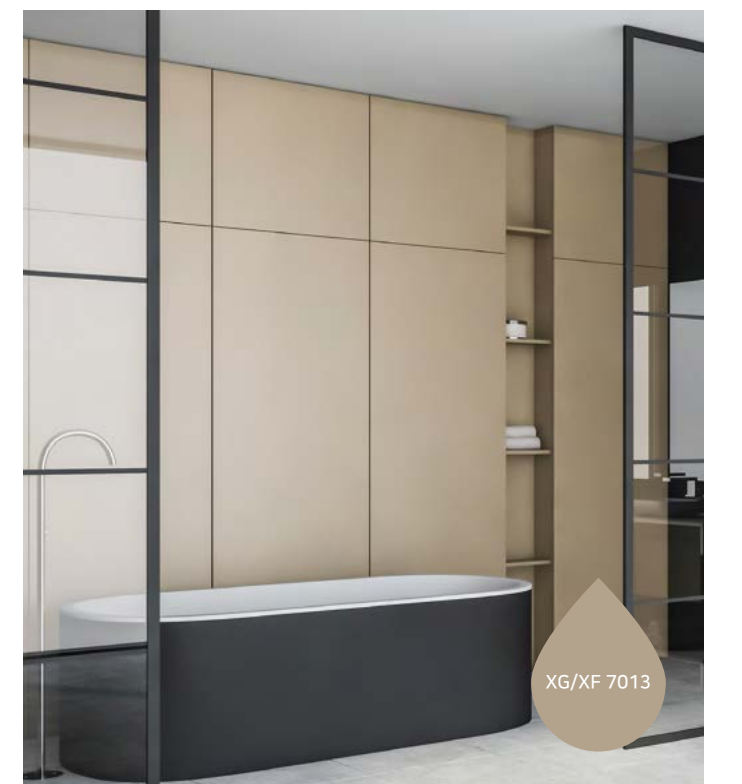
Matt Solid

XG/XF 7013



Minimal Cloud

XG/XF 7011



XG/XF 7013

The images are for illustrative purposes and may differ from actual product.

※ As being treated with a special process on the surfaces, it feels initially not sticky enough in the overlapped parts, but being fully pressed adhesive parts will be stabilized stronger over time.

METAL

Monochromatic and metallic, these two materials have recently become the most used materials in various spaces, from furniture to art walls and home appliances. Enjoy modern changes that suit your style in a variety of spaces.

HG/HF 5104

XG/XF 7019

The images are for illustrative purposes and may differ from actual product.

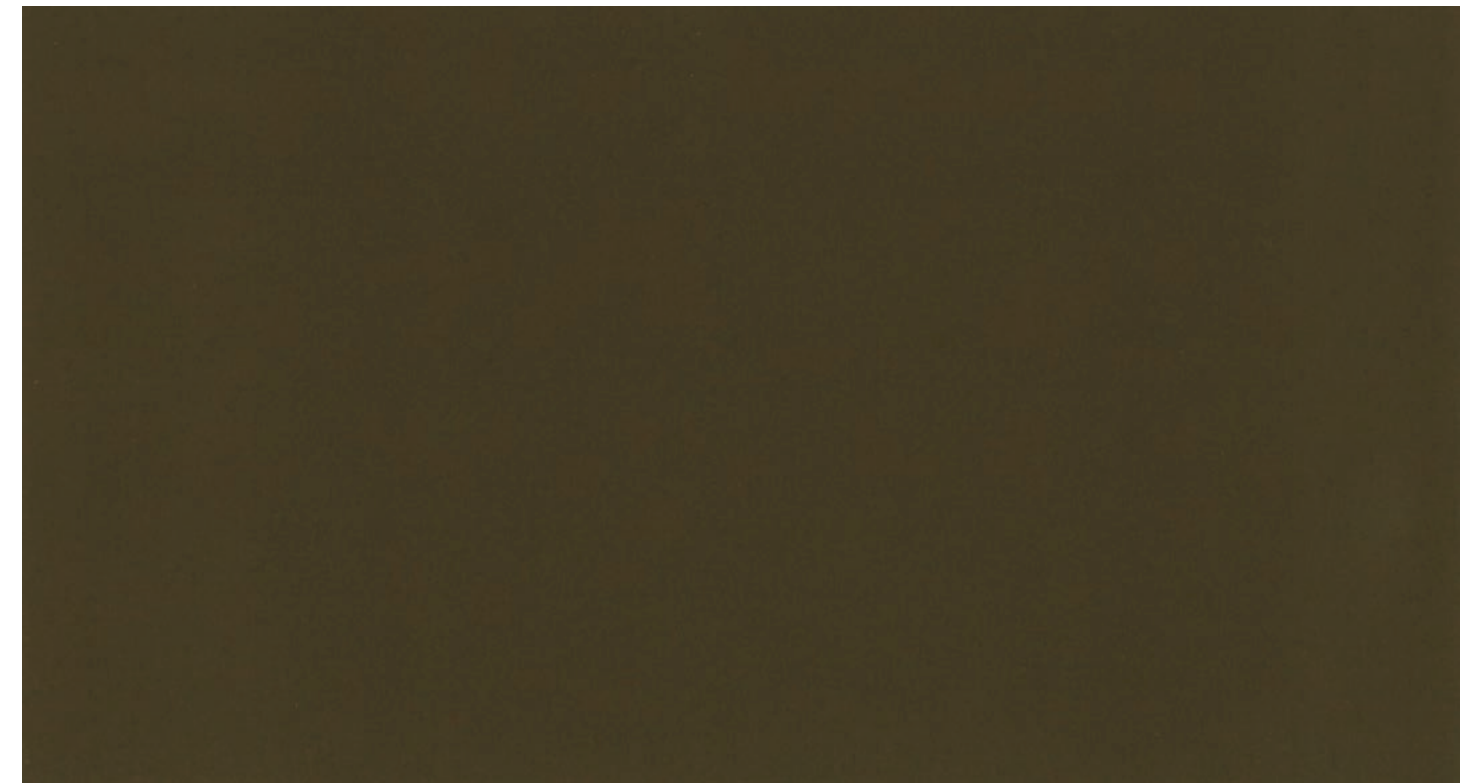
METAL PEARLESCENT METAL

방영 ● | 비방영 ● | 신제품 **NEW**



Rose Gold

NEW HG/HF 5104 ●●



Bronze Metal

NEW XG/XF 7019 ●●

METAL

PEARLESCENT METAL



White Gold **NEW** HG/HF 5100 ●●



Peach Gold **NEW** HG/HF 5101 ●●



Metal Gold **NEW** HG/HF 5102 ●●



Champagne Gold **NEW** HG/HF 5103 ●●



Bronze Gold **NEW** HG/HF 5105 ●●

METAL

HAIRLINE BRONZE METAL

Fire Retardant ● | Standard Range ● | NEW **NEW**



Yellow Bronze **NEW** XG/XF 7016 ●●



Red Bronze **NEW** XG/XF 7017 ●●



Dark Bronze **NEW** XG/XF 7018 ●●

METAL



Metal **MG 124** ●



Metal **MG 499** ●



Metal **MG/MF 125** ●●



Metal **MG/MF 123** ●●



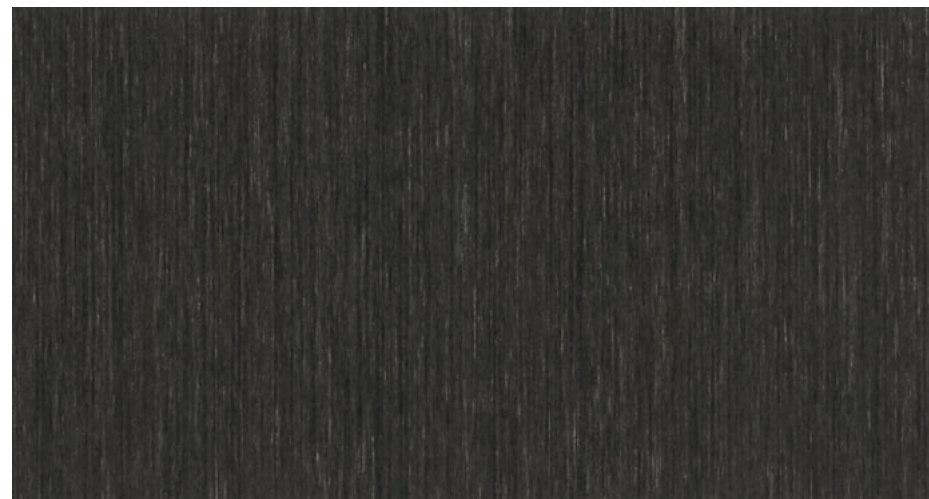
Metal **MG 498** ●



Metal **MG 3021** ●



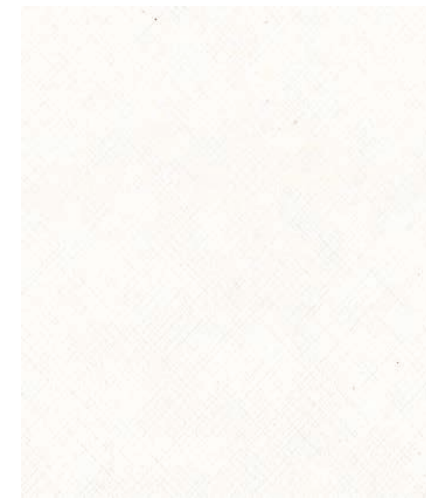
Metal **MG 3022** ●



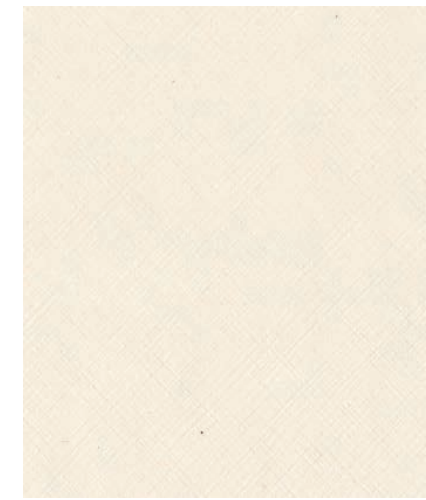
Metal **MG/MF 448** ●●

METAL

Fire Retardant ● | Standard Range ● | NEW **NEW**



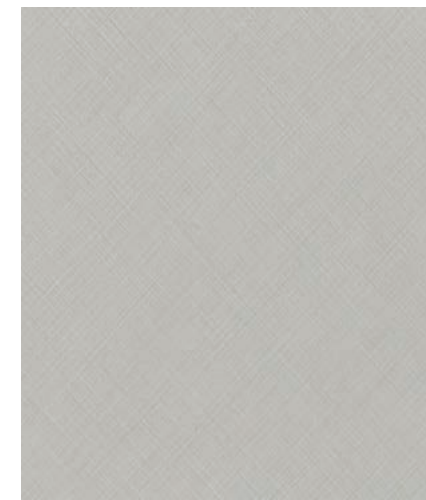
Saffiano **DG 3500** ●



Saffiano **DG 3501** ●



Saffiano **DG 3504** ●



Saffiano **DG 3502** ●



Saffiano **DG 3503** ●



Cement Metal **TG 4006** ●



Luxury Metal **JG 698** ●



Luxury Metal **TG/TF 465** ●●



Metal Leaf **TG 4004** ●

STONE & MARBLE

Apply a natural (floating) sensibility and original design to your space with colours such as concrete, stone and marble, and three-dimensional embossing. With its unchanging beauty, the stone material blends harmoniously with a variety of textured materials, including metal, matt and light, to add value to the space. Create a more luxurious atmosphere.

YG/YF 4503

MG/MF 984

The images are for illustrative purposes and may differ from actual product.

STONE & MARBLE



Aspetto

YG/YF 4503 ●●

STONE & MARBLE

STONE



Aspetto

YG/YF 4501 ●●



Aspetto

YG/YF 4502 ●●



Aspetto

YG 4500 ●

STONE & MARBLE

STONE

Fire Retardant ● | Standard Range ● | NEW **NEW**



Modern Stone

MG/MF 3080 ●●



Modern Stone

MG/MF 3081 ●●



Modern Stone

MG/MF 3082 ●●



Modern Stone

MG 3083 ●



Modern Concrete

MG/MF 3085 ●●



Concrete

TG 4010 ●

STONE & MARBLE

STONE



Concrete **MG 451** ●



Rustic Stone **MG 462** ●



Matt Marble **MG 3058** ●



Peacock Natural **MG/MF 3001** ●●



Peacock Natural **MG 3003** ●

STONE & MARBLE

STONE

Fire Retardant ● | Standard Range ● | NEW **NEW**



Concrete **MG/MF 984** ●●



Concrete **MG 985** ●



Concrete **MG/MF 986** ●●



Natural Stone **PG 6010** ●



Urban Stone **MG/MF 485** ●●



Real Stone **TG 4014** ●



Sugar Stone **SG 855** ●



Bricks **NG 968** ●

STONE & MARBLE

MARBLE



상기 이미지는 이해를 돕기 위한 연출 이미지로 실제 제품과 다를 수 있습니다.



Carrara

MG/MF 3054 ●●



Marble

TG 425 ●

STONE & MARBLE

MARBLE

Fire Retardant ● | Standard Range ● | NEW **NEW**

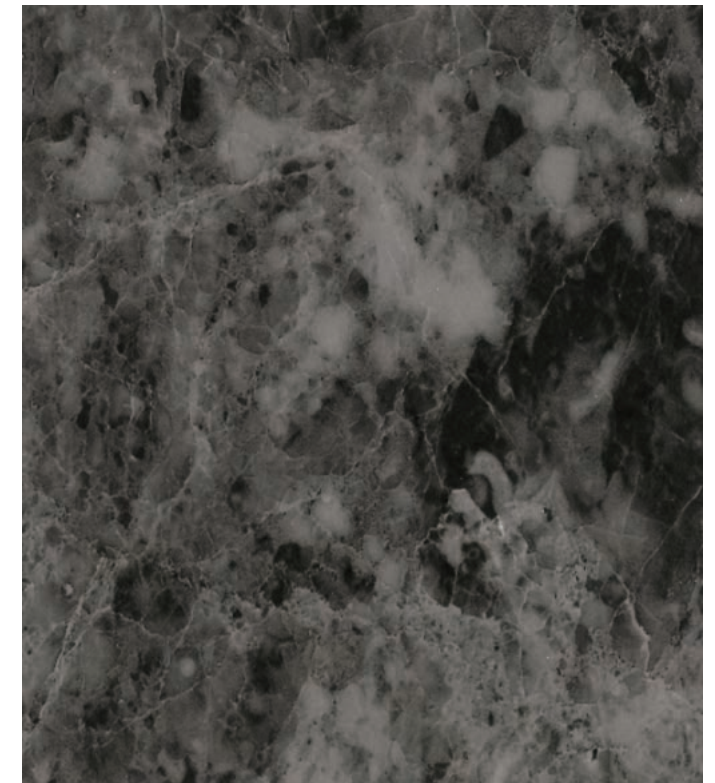


The images are for illustrative purposes and may differ from actual product.



Marble

MG 445 ●



Marble

MG 446 ●

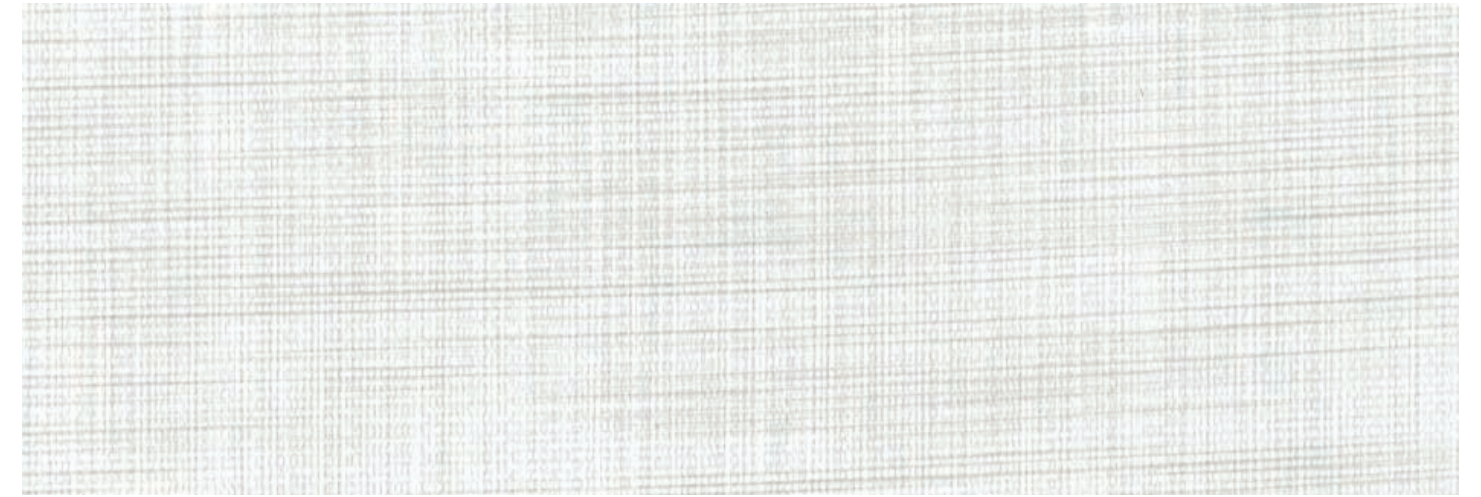
FABRIC & LEATHER

Add warmth to your space with our range of rich leather materials.
Blend with wood & rattan furniture to create a truly luxurious look and feeling.

FABRIC & LEATHER

방염 ● | 비방염 ● | 신제품 NEW

FABRIC



Plain Linen

DG/DF 3505 ●●



Plain Linen

DG/DF 3506 ●●



Plain Linen

DG/DF 3507 ●●

DG/DF 3505

The images are for illustrative purposes and may differ from actual product.

FABRIC & LEATHER

FABRIC



Linen **MG/MF 3060** ●●



Linen **MG/MF 3061** ●●



Linen **MG/MF 3062** ●●



Fabric **MG/MF 452** ●●



Fabric **MG/MF 453** ●●



Fabric **MG/MF 454** ●●



Tweed **TG 4000** ●



Natural Fabric **MG/MF 455** ●●

FABRIC & LEATHER

LEATHER

Fire Retardant ● | Standard Range ● | NEW **NEW**



Leather **MG 460** ●



Leather **TG 410** ●



Square **SE 806** ●



Leather **TG 4015** ●



Cross Stripe **SC 725** ●



Engraving **SC 774** ●



Anaconda **SP 840** ●

WOOD

From Standard OAK to TEAK and ELM, the various woodgrain designs are the best material to add warmth to the space. Special product such as 'MULTI PRINTING' products express the texture of wood more prominently, and a variety of patterns and colors. S, M, and N series are showing a rich & trendy woodgrain. Choose a product that fits your space.

ZG/ZF 5029

The images are for illustrative purposes and may differ from actual product.

WOOD

MULTI PRINTING WOOD

방염 ● | 비방염 ● | 신제품 NEW



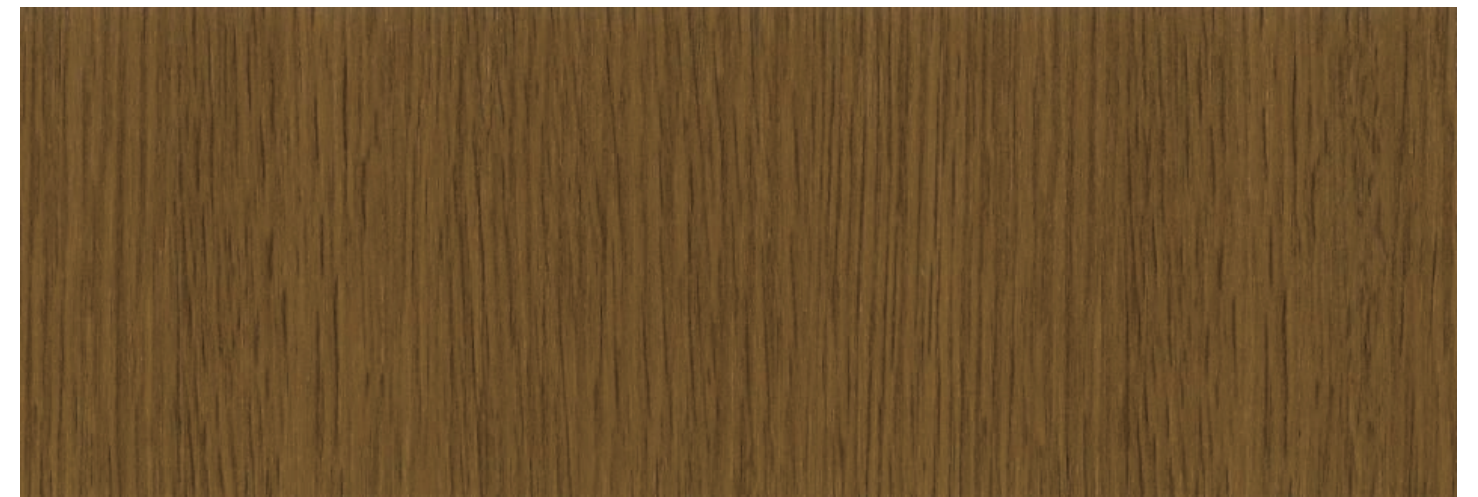
Oak

NEW ZG/ZF 5028 ●●



Oak

NEW ZG/ZF 5029 ●●



Oak

NEW ZG/ZF 5030 ●●

WOOD

MULTI PRINTING WOOD



Light Oak

NEW ZG/ZF 5038 ●●



Light Oak

NEW ZG/ZF 5039 ●●



Light Oak

NEW ZG/ZF 5040 ●●



ZG/ZF 5040

WOOD

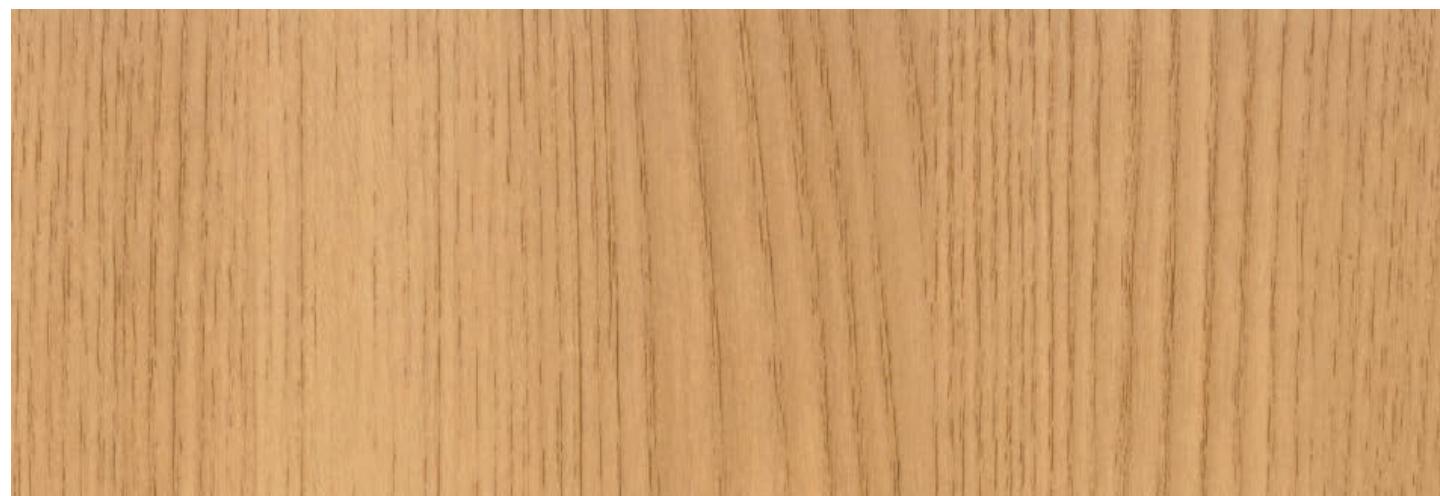
MULTI PRINTING WOOD



Oak NEW ZG/ZF 5033 ●●



Oak NEW ZG/ZF 5034 ●●



Oak NEW ZG/ZF 5035 ●●



ZG/ZF 5035

WOOD
MULTI PRINTING WOOD



ZG/ZF 5045

WOOD
MULTI PRINTING WOOD

Fire Retardant ● | Standard Range ● | NEW **NEW**



Washed Ash

NEW ZG/ZF 5041 ●●



Washed Ash

NEW ZG/ZF 5044 ●●



Washed Ash

NEW ZG/ZF 5045 ●●



Washed Ash

NEW ZG/ZF 5042 ●●



Washed Ash

NEW ZG/ZF 5043 ●●

WOOD

MULTI PRINTING WOOD



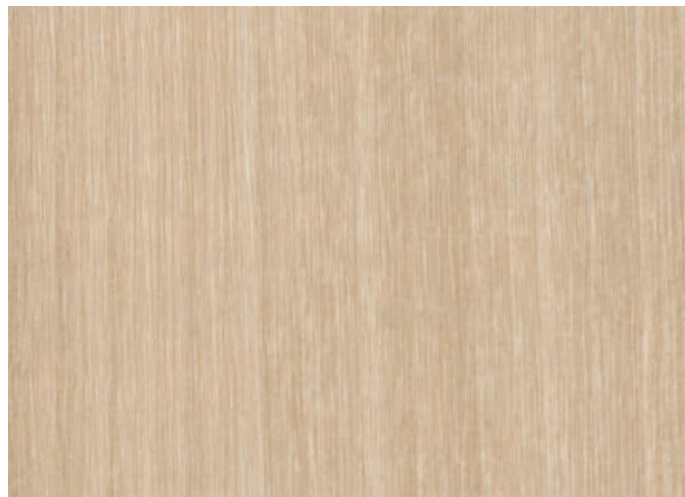
Elm

NEW ZG/ZF 5036 ●●



Elm

NEW ZG/ZF 5037 ●●



Maple

NEW ZG/ZF 5031 ●●



Maple

NEW ZG/ZF 5032 ●●



Amazahoue

NEW EG/EF 6100 ●●



Amazahoue

NEW EG/EF 6101 ●●

WOOD

MULTI PRINTING WOOD

Fire Retardant ● | Standard Range ● | NEW **NEW**



Oak

ZG/ZF 5019 ●●



Oak

ZG/ZF 5018 ●●



Oak

ZG/ZF 5020 ●●



Oak

ZG/ZF 5021 ●●



Oak

ZG/ZF 5022 ●●



Oak

ZG 5027 ●

WOOD

MULTI PRINTING WOOD



Multi Print Wood **ZG/ZF 5000** ●●



Vintage Oak **ZG/ZF 5009** ●●



Multi Print Wood **ZG 5003** ●



Vintage Oak **ZG/ZF 5010** ●●



Vintage Oak **ZG 5011** ●



Vintage Oak **ZG/ZF 5012** ●●



Teak **ZG/ZF 5015** ●●



Teak **ZG/ZF 5016** ●●



ZG/ZF 5009

WOOD

M series



Ash

MG/MF 3084 ●●



Pine

MG/MF 3069 ●●



Wizard Grain

MG/MF 3064 ●●



Wizard Grain

MG/MF 3065 ●●



Wizard Grain

MG/MF 3066 ●●



Ash

MG 3005 ●



Teak

MG 3006 ●



Primary Oak

MG/MF 3007 ●●



MG/MF 3084

WOOD
N series



String Wood **NG 402** ●



Sycamore **NG 158** ●



Stripe Wood **NG/NF 326** ●●



Pearl Ash **NG 2010** ●



Oak **NG 2006** ●



White Ash **NG/NF 2001** ●●



Elm **NG 217** ●



Elm **NG 218** ●



Pear **NG/NF 250** ●●

WOOD
N series

Fire Retardant ● | Standard Range ● | NEW **NEW**



Birch **NG/NF 225** ●●



Oak **NG/NF 207** ●●



Vilora **NG/NF 284** ●●



Maple **NG/NF 388** ●●



Oak **NG/NF 2020** ●●



Elm **NG/NF 336** ●●



Maple **NG/NF 349** ●●



Walnut **NG/NF 227** ●●



Oak **NG 971** ●

WOOD

N series



Oak **PG 904** ●



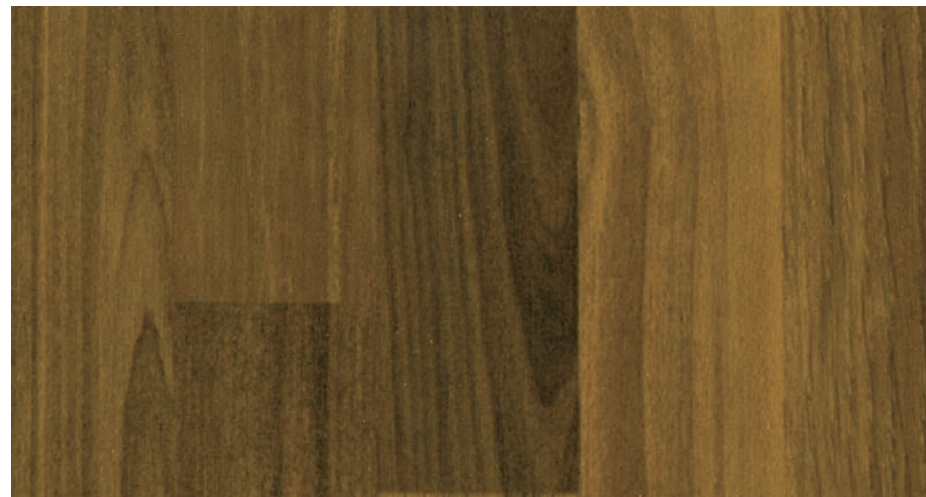
Oak **NG/NF 2021** ●●



Oak **NG/NF 2022** ●●



Style Bamboo **NG 2024** ●



Multi Wood **NG 253** ●



Noce **NG/NF 03** ●●



Multi Wood **NG 256** ●

WOOD

N series

Fire Retardant ● | Standard Range ● | NEW **NEW**



Oak **NG 960** ●



Walnut **NG 267** ●



Oak **NG 962** ●



Antique Teak **NG 493** ●



Antique Pine **NG/NF 400** ●●



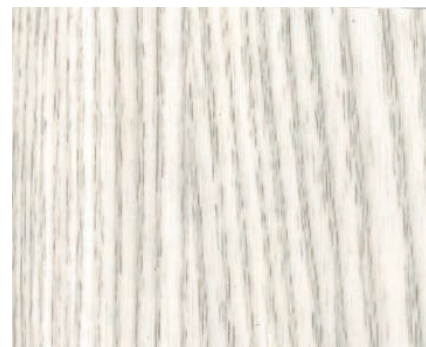
Golden Teak **PG 940** ●

WOOD

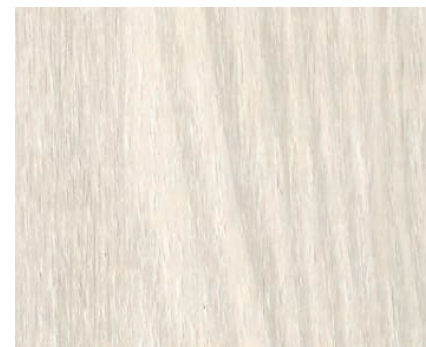
S series



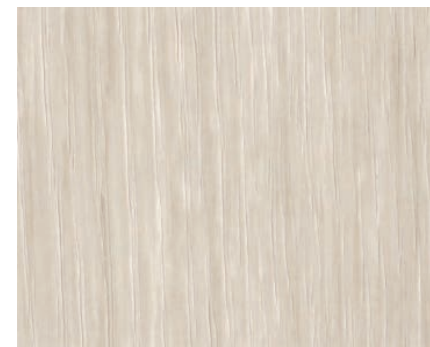
Antique Wood **SG/SF 1107** ●●



Ash **SG/SF 179** ●●



Elm **SG/SF 81** ●●



Ash **SG/SF 1110** ●●



Acacia **SG 12** ●



Pine **SG/SF 142** ●●



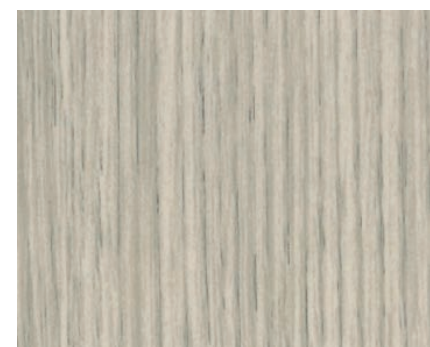
Washed Oak **SG/SF 1113** ●●



Ash **SG/SF 1100** ●●



Ash **SG/SF 178** ●●



Ivy **SG 209** ●



Ivy **SG 211** ●

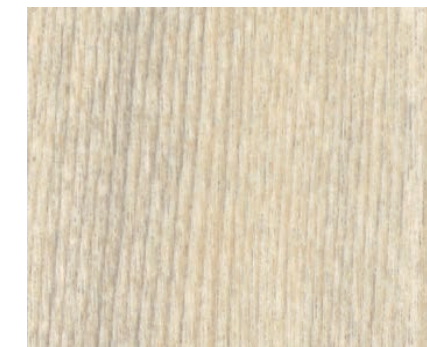


Oak **SG/SF 361** ●●

WOOD

S series

Fire Retardant ● | Standard Range ● | NEW **NEW**



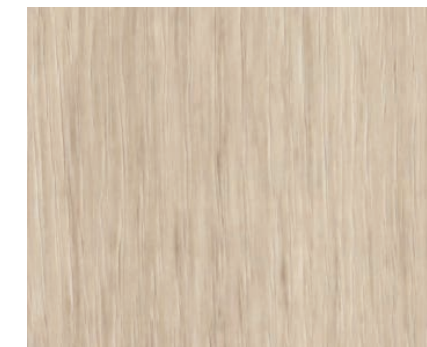
Ash **SG 140** ●



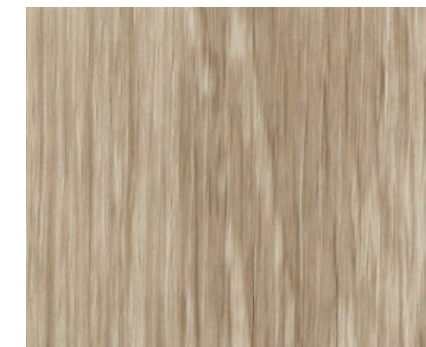
Pine **SG 143** ●



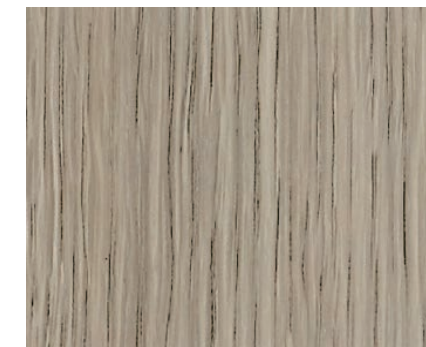
Ash **SG/SF 37** ●●



Ash **SG/SF 1111** ●●



Ash **SG/SF 1112** ●●



Oak **SG 171** ●



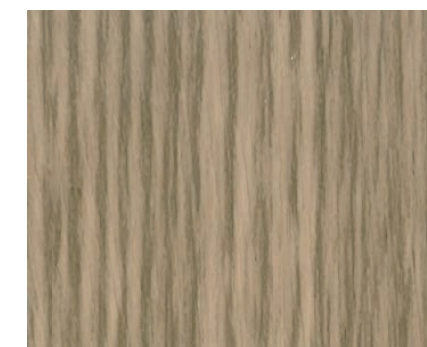
French Oak **SG/SF 30** ●●



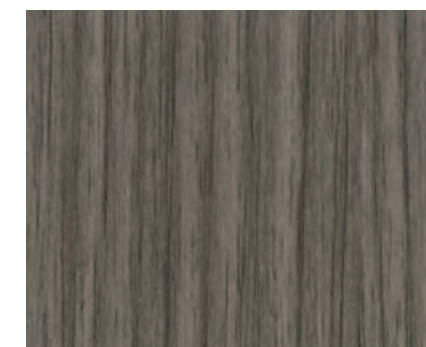
Oak **SG/SF 82** ●●



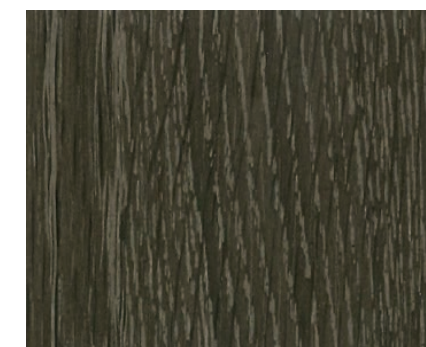
Washed Oak **SG 1115** ●



Oak **SG/SF 40** ●●



Montaigne Walnut **SG 385** ●

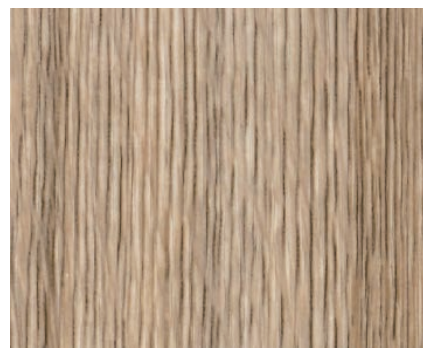


Ash **SG 1116** ●

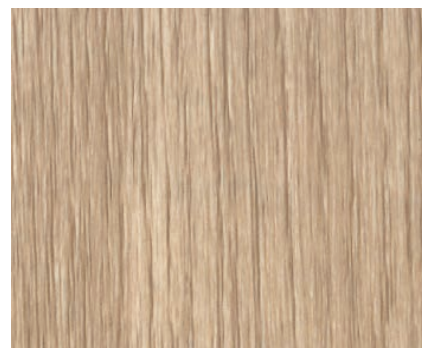
WOOD
S series



상기 이미지는 이해를 돕기 위한 연출 이미지로 실제 제품과 다를 수 있습니다.



French Oak **SG/SF 29** ●●



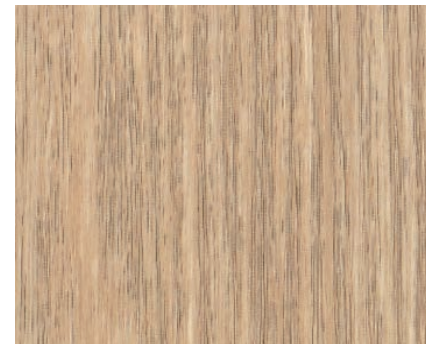
Oak **SG/SF 55** ●●



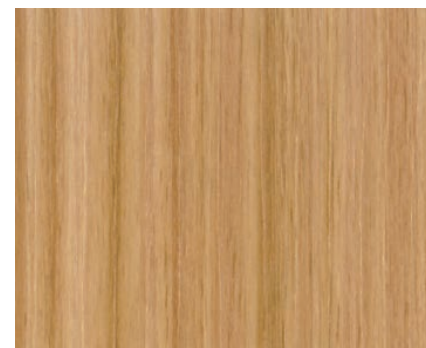
Oak **SG/SF 54** ●●



Teak **SG/SF 249** ●●



Ash **SG/SF 1102** ●●



Compile Wood **SG/SF 282** ●●

WOOD
S series

Fire Retardant ● | Standard Range ● | NEW NEW



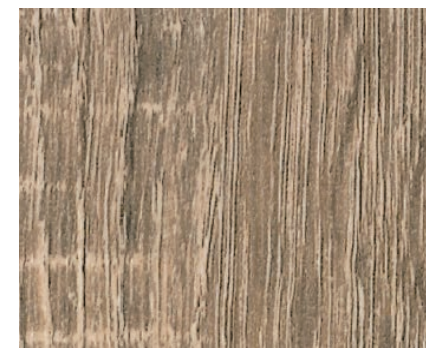
Maple **SG/SF 20** ●●



Ash **SG/SF 1101** ●●



Cherry **SG 1118** ●



Sonoma Oak **SG/SF 167** ●●



Maple **SG/SF 43** ●●



Washed Oak **SG/SF 1114** ●●



Teak **SG/SF 09** ●●



Ash **SG 141** ●



Ash **SG/SF 181** ●●



Oak **SG 98** ●



Ash **SG/SF 177** ●●



Oak **SG/SF 189** ●●

WOOD

S series



Ash

SG/SF 58 ●●



Maple

SG/SF 363 ●●



Castagno Oak

SG/SF 381 ●●



Maple

SG/SF 251 ●●



Oak

SG/SF 190 ●●



Akagashi

SG/SF 237 ●●



Oak

SG/SF 169 ●●



Oak

SG/SF 170 ●●



Acacia

SG/SF 10 ●●



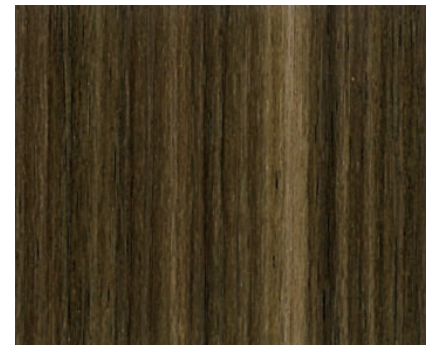
Oak

SG 56 ●



Acacia

SG/SF 186 ●●



Compile Wood

SG/SF 148 ●●

WOOD

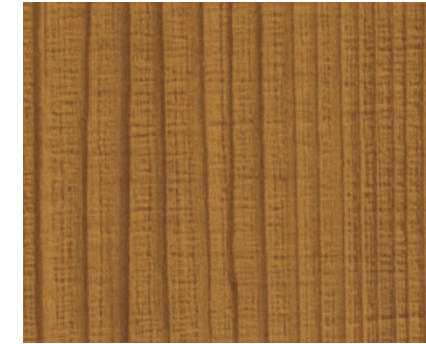
S series

Fire Retardant ● | Standard Range ● | NEW **NEW**



Cherry

SG/SF B1 ●●



Pine

SG/SF 44 ●●



Cherry

SG/SF 101 ●●



Castagno Oak

SG/SF 383 ●●



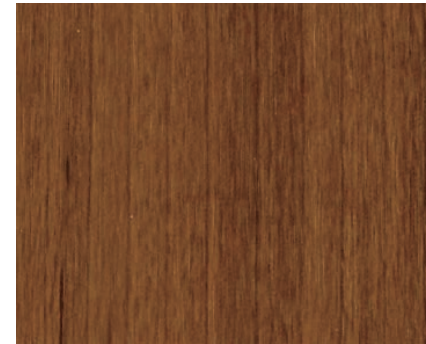
Cherry

SG 26 ●



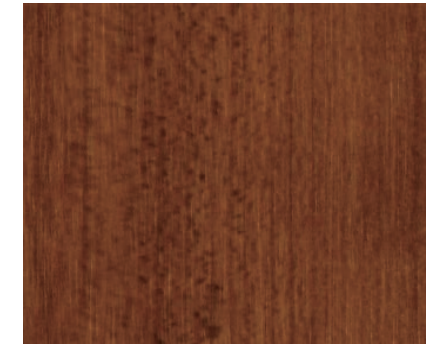
Cherry

SG 23 ●



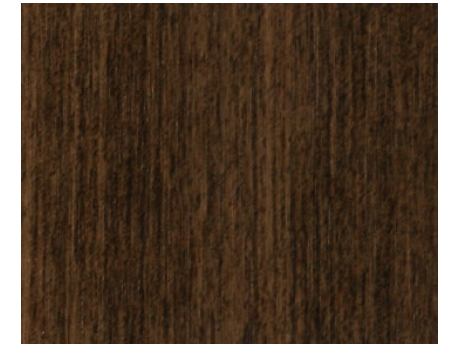
Cherry

SG/SF 31 ●●



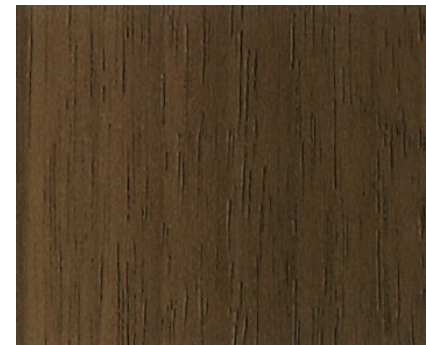
Cherry

SG 28 ●



Anegre

SG/SF 1143 ●●



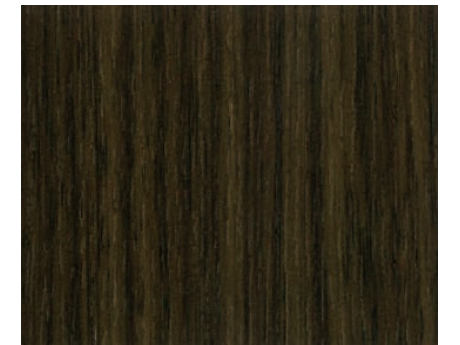
Walnut

SG/SF 89 ●●



Ash

SG /SF 1103 ●●



Walnut

SG/SF 149 ●●

WOOD

S series



Walnut

SG/SF 278 ●●



Sapele

SG/SF 243 ●●



Teak

SG/SF 36 ●●



Walnut

SG 61 ●



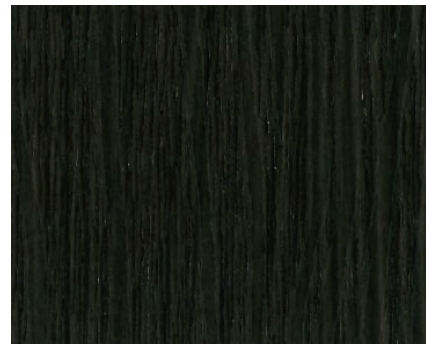
Ash

SG/SF 164 ●●



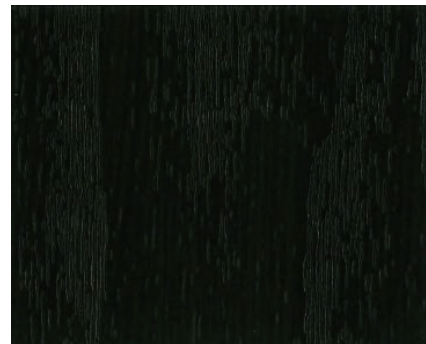
Antique Wood

SG 230 ●



Antique Wood

SG/SF 1109 ●●



Black Wood

SG/SF 52 ●●



SG/SF 243

상기 이미지는 이해를 돕기 위한 연출 이미지로 실제 제품과 다를 수 있습니다.

VERSA-TILE

Versa-tile's Versa means 'a change', 'an Alteration' or 'another one'.
You can create a variety of different looks compared to traditional interior films.
Apply to floors that need maintenance, walls in the kitchen, or art walls.

BG 8007

The images are for illustrative purposes and may differ from actual product.

VERSA-TILE

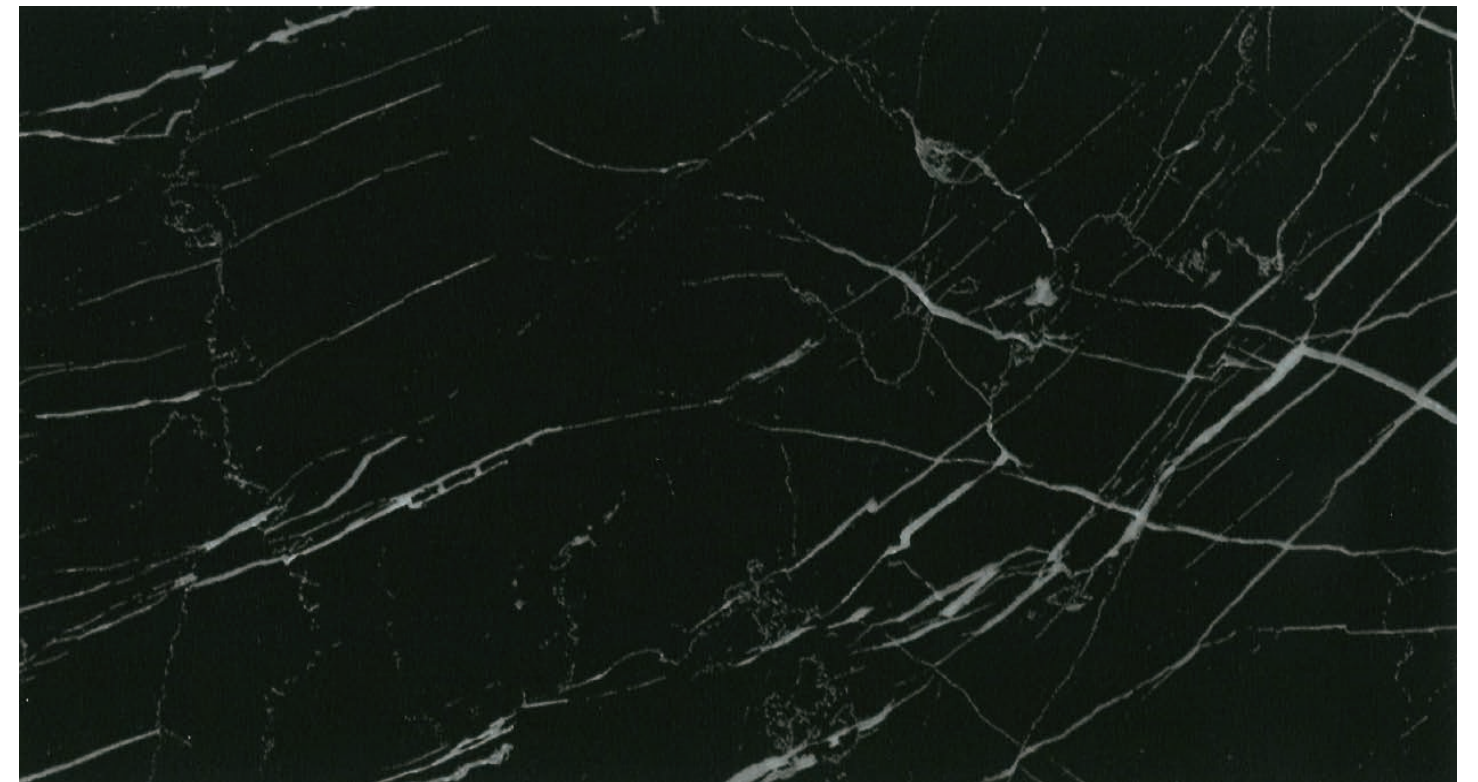
방영 ● | 비방영 ● | 신제품 NEW

Versa-tile is a product designed to be applied to areas that require a variety of expressions, such as floors that require maintenance, kitchen walls, or art walls, by changing the thickness of the existing interior film and adding flooring functionality.



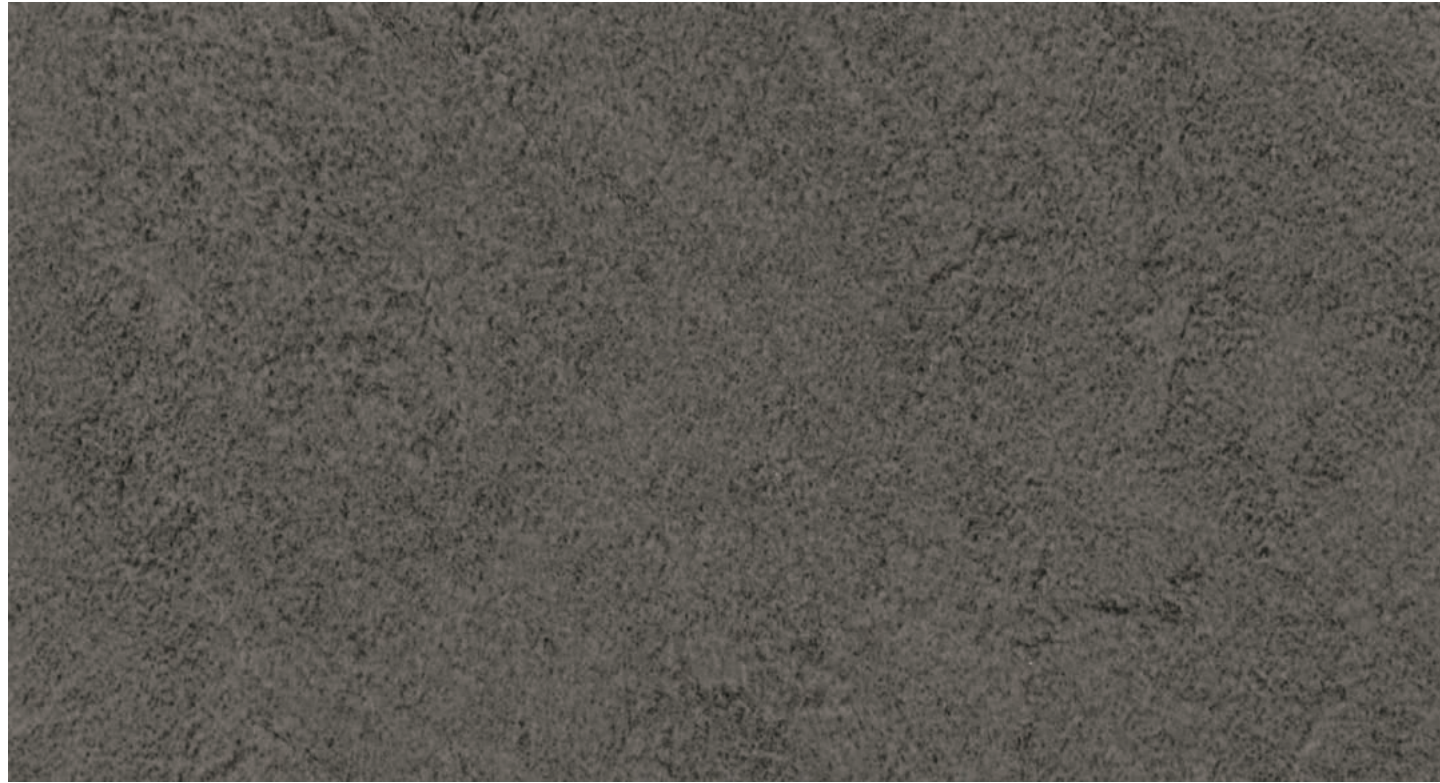
Carrara

NEW BG 8006 ●



Marquina

NEW BG 8007 ●



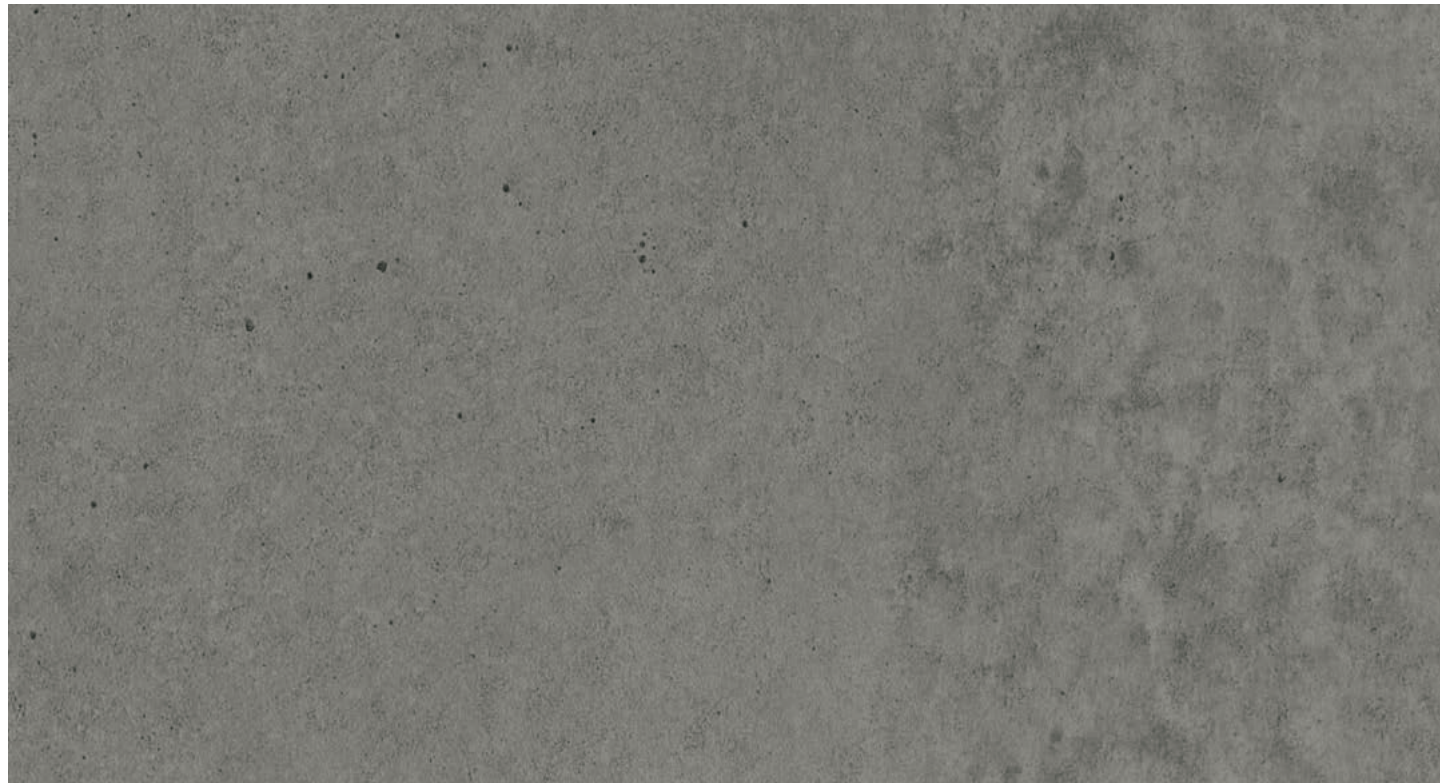
Travertine

BG 8004 ●



Herringbone

BG 8001 ●



Concrete

BG 8003 ●



Herringbone

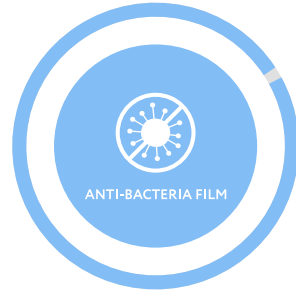
BG 8000 ●



ANTI BACTERIA FILM

SOIF ANTI BACTERIA

Staphylococcus aureus
Escherichia coli
Klebsiella pneumoniae



Antibacterial activity
reduction rate
99.9%



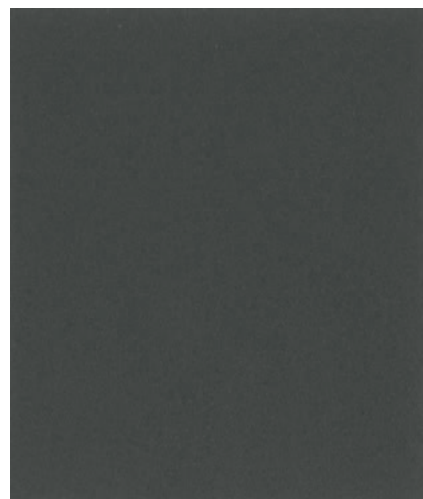
AB 3800



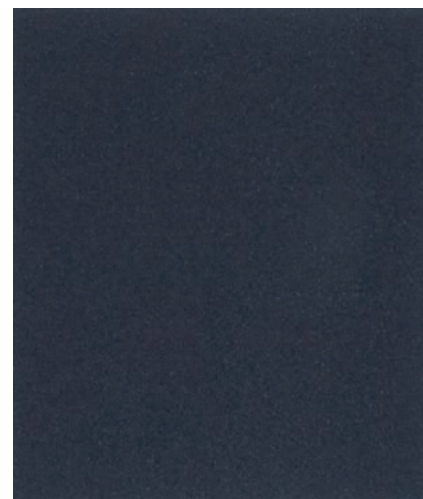
AB 3801



AB 3802



AB 3803



AB 3804



AB 3801

(1) Preparation

- Before applying interior films, the surface condition of where to be applied must be checked for a proper installation.

MDF	Please use densely homogenous MDFs, this enhances adhesion and fire retardant performance.
Iron plate (aluminium, iron, etc.) steel	Remove contaminants such as oil on the surface with solvents such as alcohol, check for damage to the surface due to solvents, treat irregularities and welding areas with filler and remove any foreign matter with wallpaper scrappers, sandpaper etc. and then clean area with lint free cloths and cleaning brushes.
Ready-made products	Depending on the surface condition, the primer must be used to prevent shrinkage and dropout, and the surface must be checked prior to the installation.

- Before installation, inspection of the product selected by the consumer (product name, pattern, appearance status) must re-check in advance.
- Installation work must be conducted after inspection of all preparation works done, this includes the coating, painting and sealant process of any woodwork or porous substrates.
- For a stable working environment, check the humidity of the construction site and keep the room temperature at (15°C to 25°C) if possible.
- The across section - overlapping area (cutting area) of the surfaces (MDF, etc.) where the film will be applied must be sufficiently cleaned or polished with sandpaper. The condition of the wood surface (particularly the edges) is rough, it must be cleaned or polished with sandpaper or applied after filler treatment.

(2) Primer Treatment

- Apply a sufficient primer to the surface of substrate (MDF, PB, etc.) 1-2 times.
- Since the cutting (slit) surface of wood has a high absorption rate and uneven surfaces, the primer should be fully applied 2-3 times.
- Primers will need approximately 2 hours drying time. It is advised and recommended that you check the substrate and thoroughly dry and clean prior to installation.

(3) Installation Film

- Once the primer surface is dry enough, make the surface smooth and overlapping section is needed to be cleaned with sandpaper and remove residue with a lint free cloth and make sure area is completely dust free.
- Surface treatment by using sandpapers is required and make sure the surface is clean before applying primer to enhance adhesion performance.
- Please make a pressure using by Helt or Hera (Spatula). Rubbing or Hard Pressure may work to strengthen the Adhesion 2 -3 times.
- Apply interior films carefully, not wrapping films forcefully pull over MDF plates, heat or humidity can cause a MDF distortion.

(4) Specific Product Instructions

SC/SE (man-made leather type)
<ul style="list-style-type: none"> • Do not overlap due to the embossed depth and please apply Solvent Type Primer to press firmly. In order to maximize the visual effect of the product, it is necessary to check the type and condition of the surfaces and remove all residues prior to installation. Do not rub too hard.
SP
<ul style="list-style-type: none"> • To enlarge the design effect, the film is too soft on the top. Please do not rub too hard.
JG/JF
<ul style="list-style-type: none"> • JG/JF is specially processed using Alumium, detachment of where film lines are overlapped can cause a peeling of films surfaces. So pay attention at installing
PREMIUM MATT LINE-UPS, SOFT MATT (Soild)
<ul style="list-style-type: none"> • As being treated with a special process on the surfaces, it feels initially not sticky enough in the overlapped parts, but being fully pressed adhesive parts will be stabilized stronger over time. (Method when contaminated : Wipe with an alkaline alcohol to remove.)

(5) Product Storage and Precautions

- Please avoid moisture and direct sunlight, and please do not use it outdoors.
- The surface may become discolored during prolonged exposure to sunlight or ultraviolet light.
- It is recommended that correct storage temperatures are used for storing the product to be free from long term storage defects. (15°C to 25°C)
- When installing the film, please use manufacturer's recommend products.

- **Unauthorized reproduction and use of content published in this sample book is prohibited.**
- **The colors of the products listed in the samplebook may differ from the actual product.**